

Oxford Archaeology and the Challenges of Going Open Source in Geomatics

Chris Puttick
&
Leif Isaksen



Oxford Archaeology

- independent archaeology and heritage practice
- 250 staff
- founded in 1973
- educational charity
- strategic commitment “Open Archaeology”



Open Archaeology

Open data

Open standards

Open Source



Open Source

- making/developing our own software open source
- using open source stuff:

Linux (SuSE)

NX

Solaris

Python

OpenOffice.org

FreeMind

Alfresco

PDFCreator

Joomla

GanttProject

LifeRay

PostgreSQL

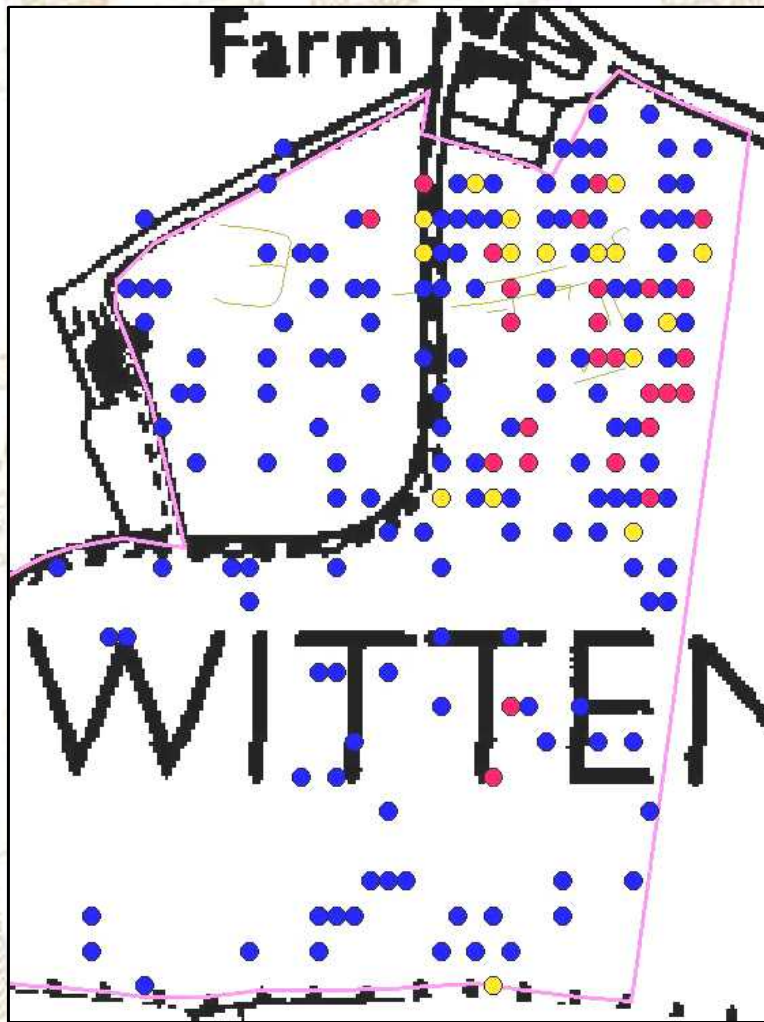
(and some GIS bits...)

Spatial Data



- Landscape surveys
- Historic maps
- Aerial photos
- Geophysics

Spatial Data



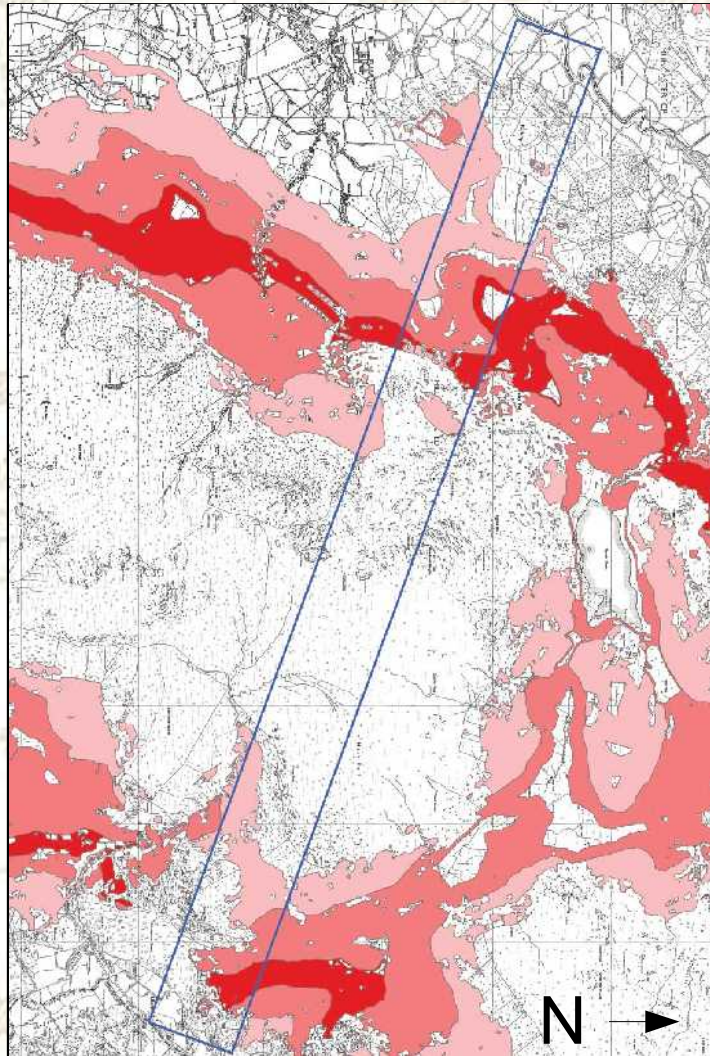
- Landscape surveys
- Historic maps
- Aerial photos
- Geophysics
- Site plans
- Artefact distributions

Spatial Data



- Landscape surveys
- Historic maps
- Aerial photos & geophysics
- Site plans
- Artefact distributions
- Finds

Spatial Data



- Landscape surveys
- Historic maps
- Aerial photos & geophysics
- Site plans
- Artefact distributions
- Finds
- Analysis

Legacy: ArcGIS and AutoCAD

- Pros

- Easier to find staff
- Wide support base
- Lots of extra features

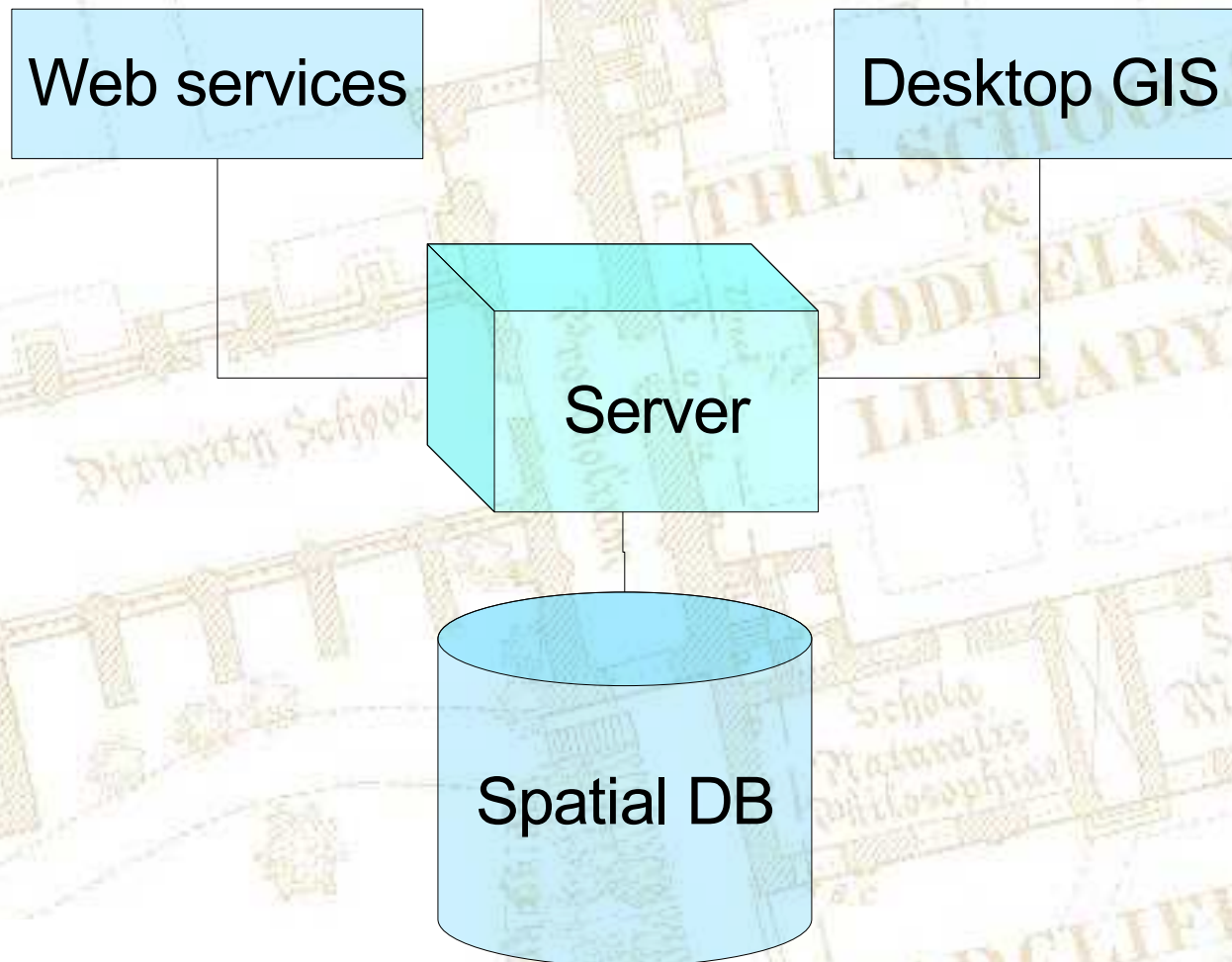


- Cons

- Cost (but CHEST agreement)
- Cross-formatting
- Interoperability
- Backwards compatibility
- Published standards

Autodesk®

A Spatial Data Infrastructure?



The Challenges

- Choice
- Overlap
- Standards
- Updatability
- Functionality
- Staff Training
- Documentation
- Changing specs
- Legacy migration
- Independent review
- Platform-dependence
- File structures/formats





The Big Question

How do you get the
BIG
picture?

3 Proposals

An independent reporting webgroup

An abstract SDI framework

Generic models





oxfordarchaeology

exploring the human journey



<http://thehumanjourney.net/>