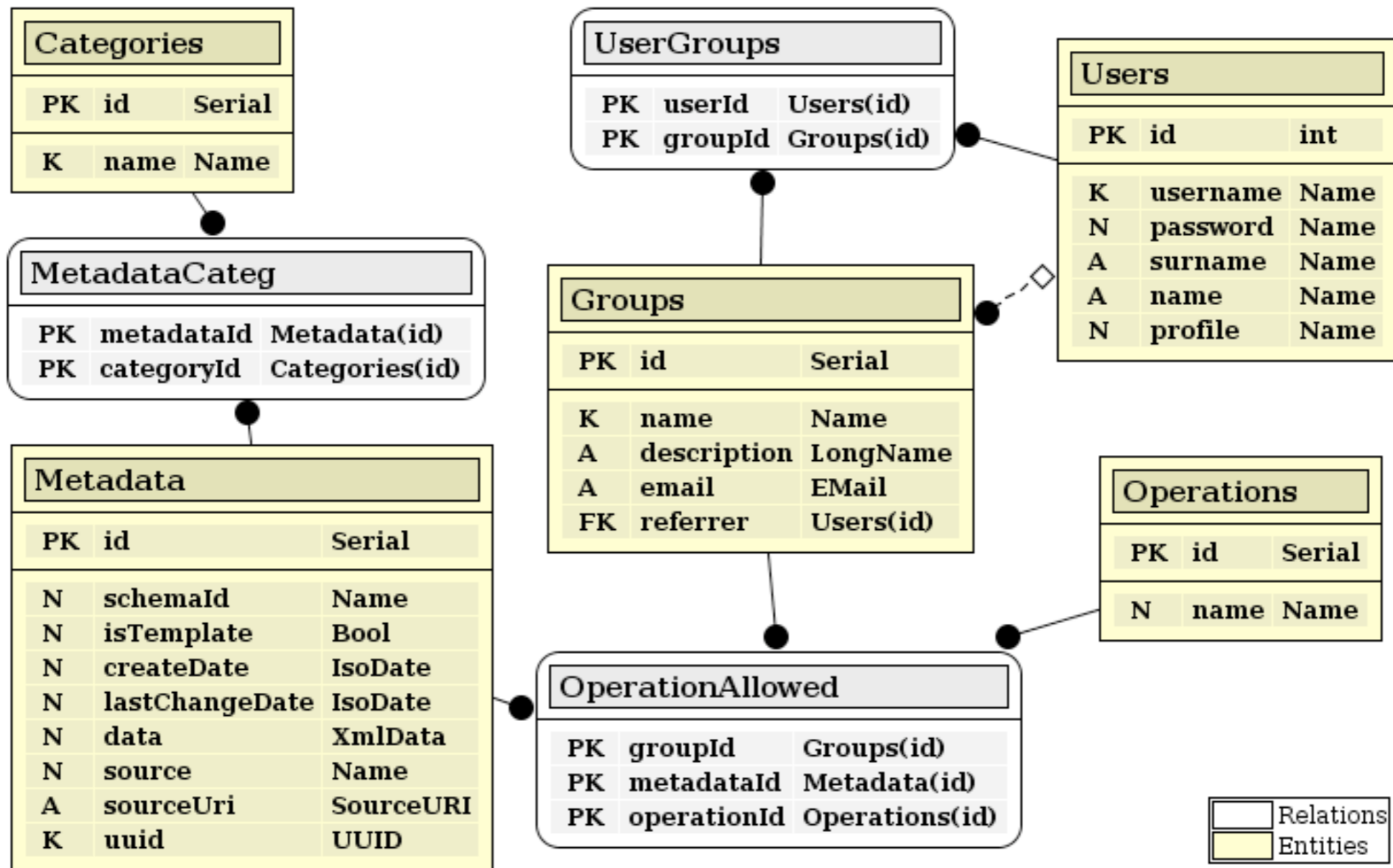
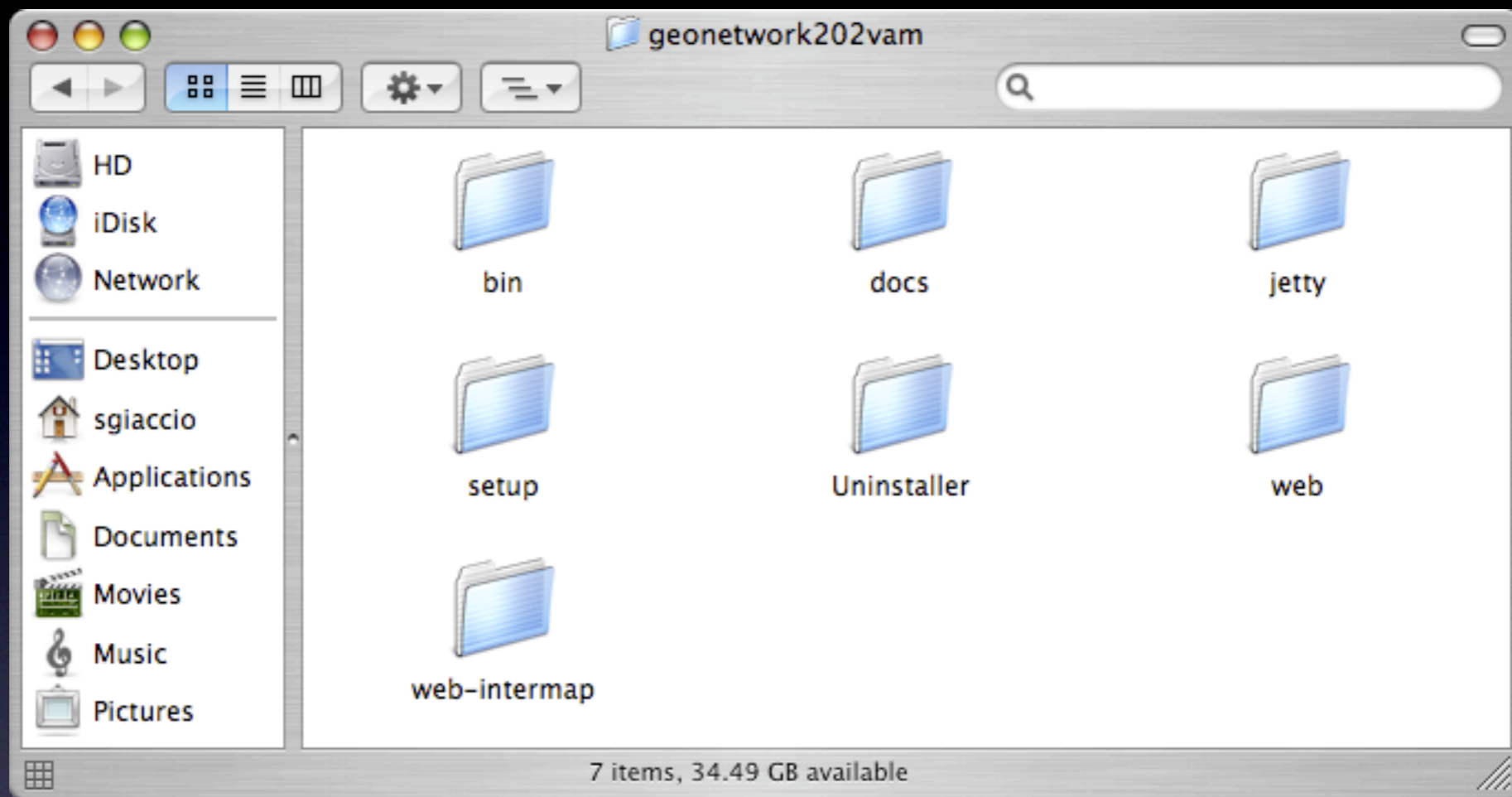


GeoNetwork opensource

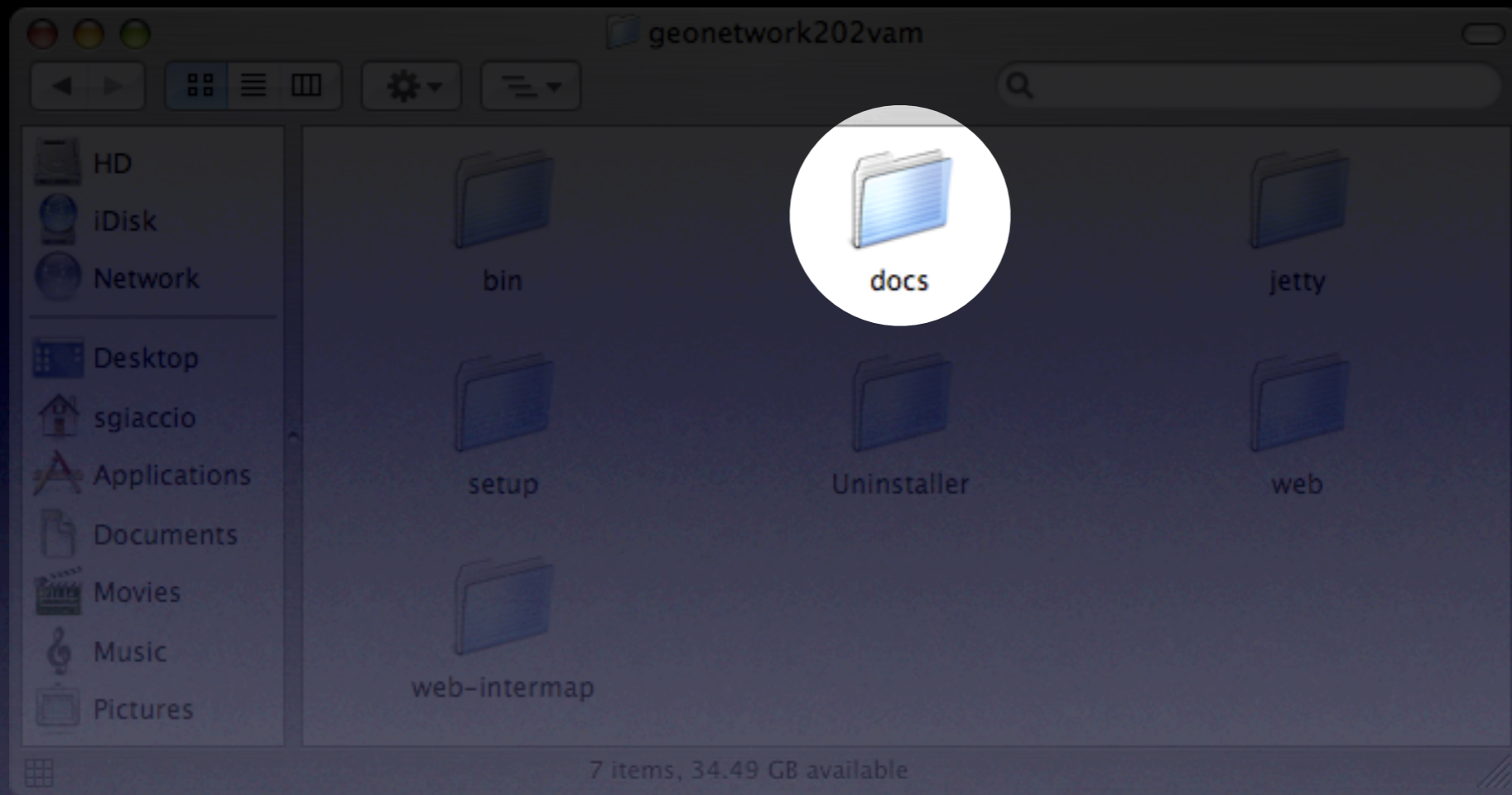
database and directory structure



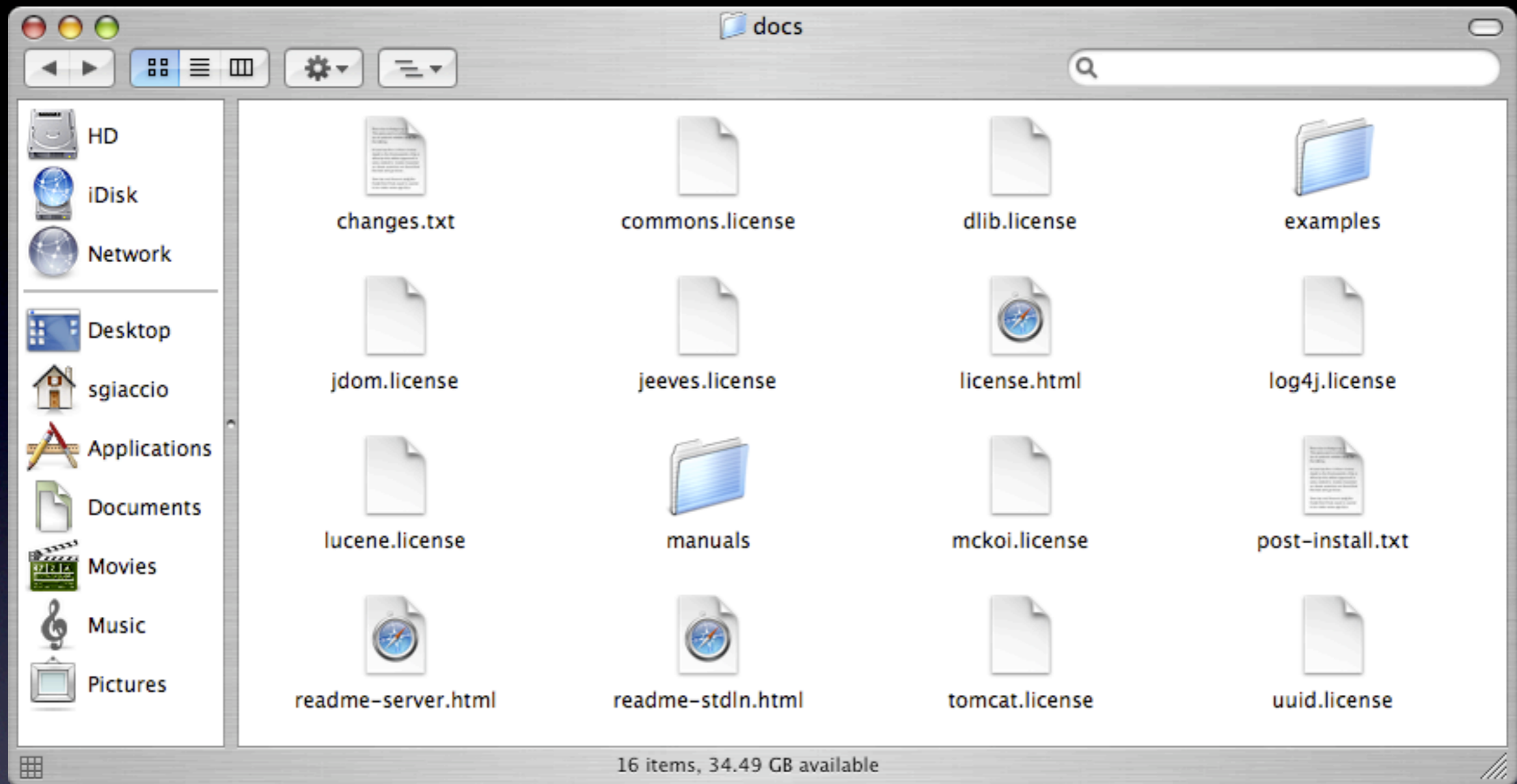
Database schema



Root directory



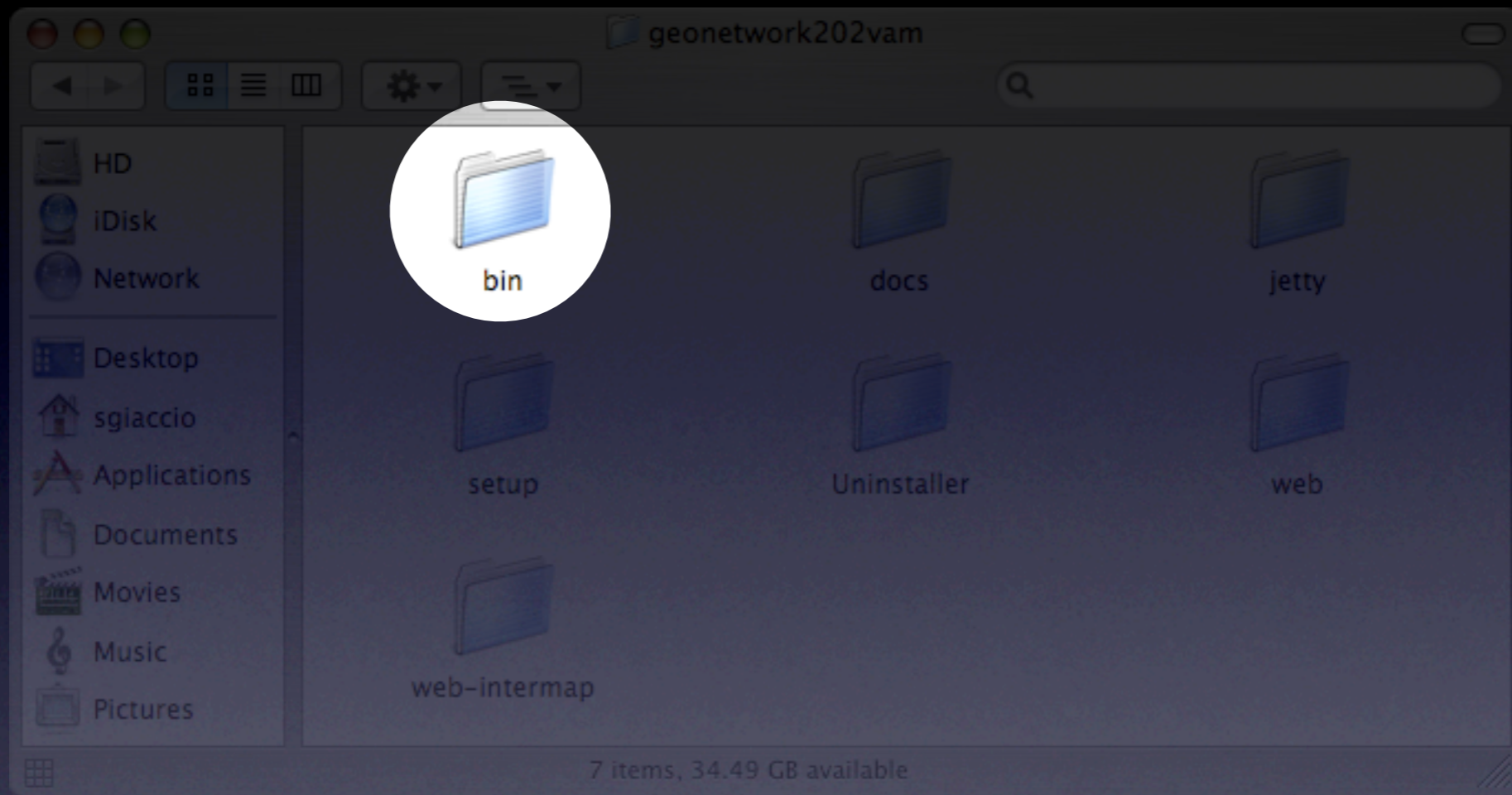
docs directory



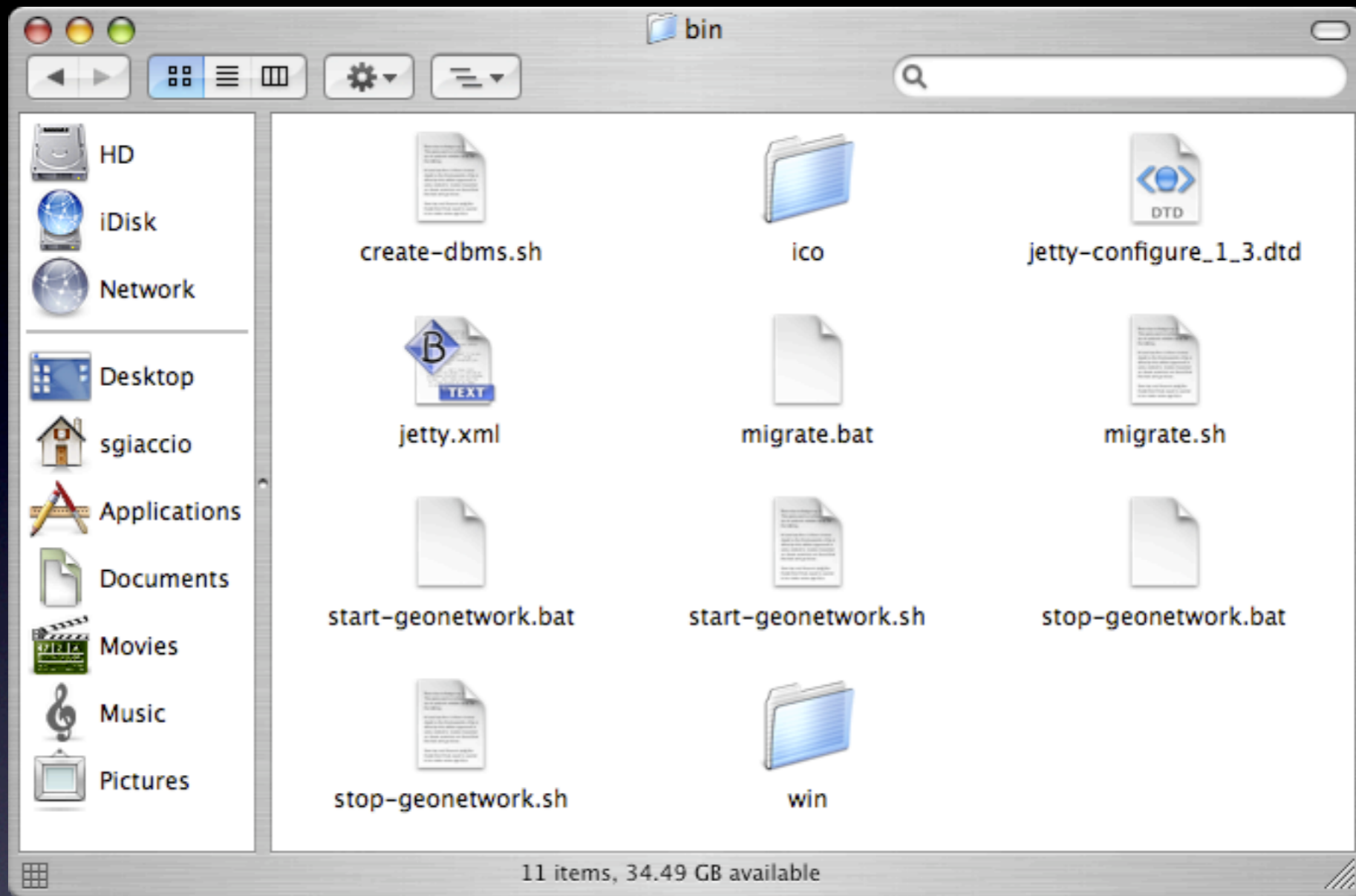
docs directory

-
- GeoNetwork license file
 - License files for external jars
 - Readme files
 - Post-install instructions
 - GeoNetwork configuration examples
 - Manuals

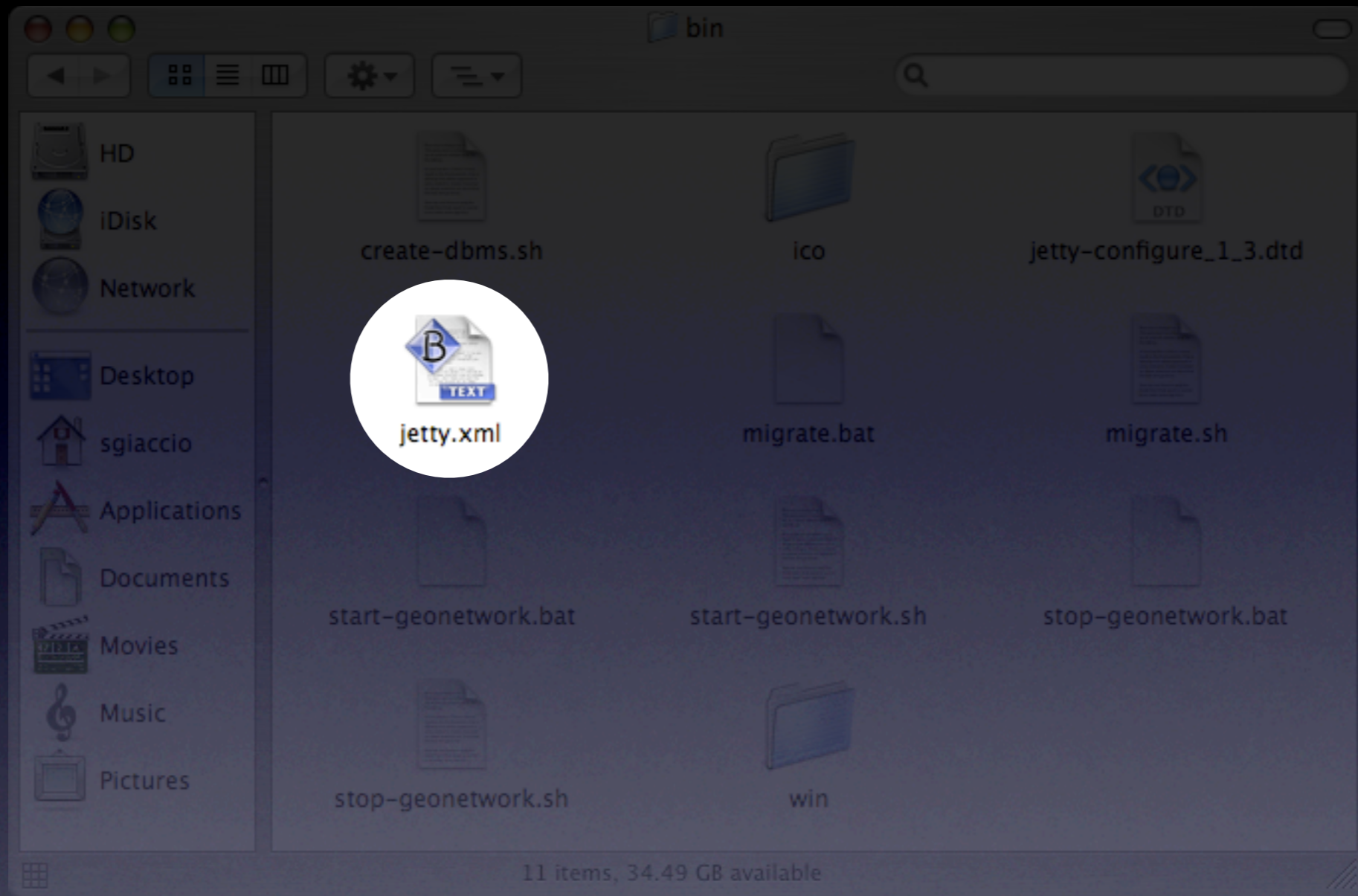
docs directory



bin directory



bin directory



bin directory

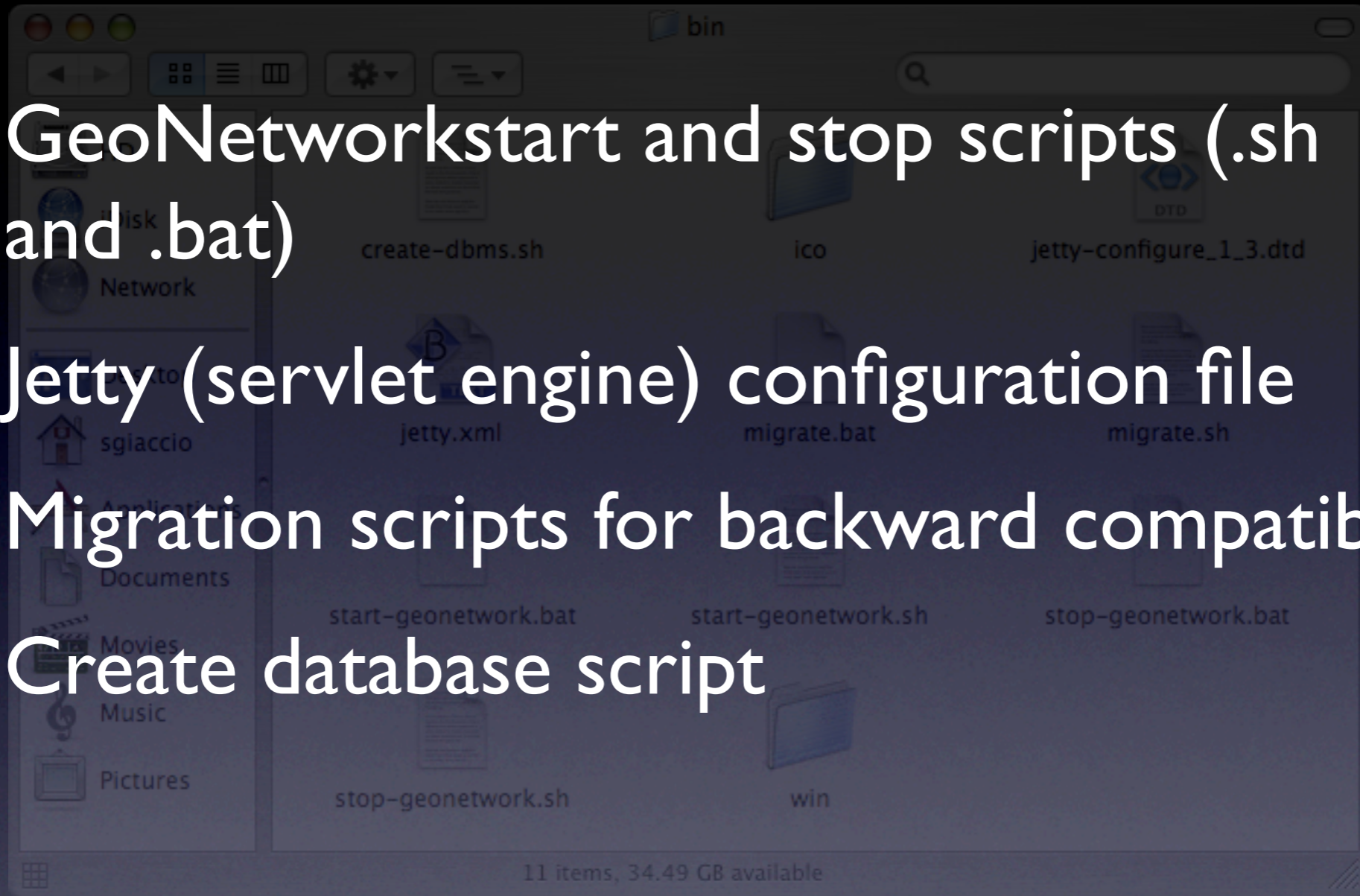
/jetty/bin/jetty.xml

```
...  
<Call name="addListener">  
  <Arg>  
    <New class="org.mortbay.http.SocketListener">  
      <Set name="port">8080</Set>  
      <Set name="MinThreads">10</Set>  
      <Set name="MaxThreads">200</Set>  
      <Set name="MaxIdleTimeMs">30000</Set>  
      <Set name="lowResources">50</Set>  
      <Set name="LowResourcePersistTimeMs">2000</Set>  
    </New>  
  </Arg>  
</Call>  
...
```

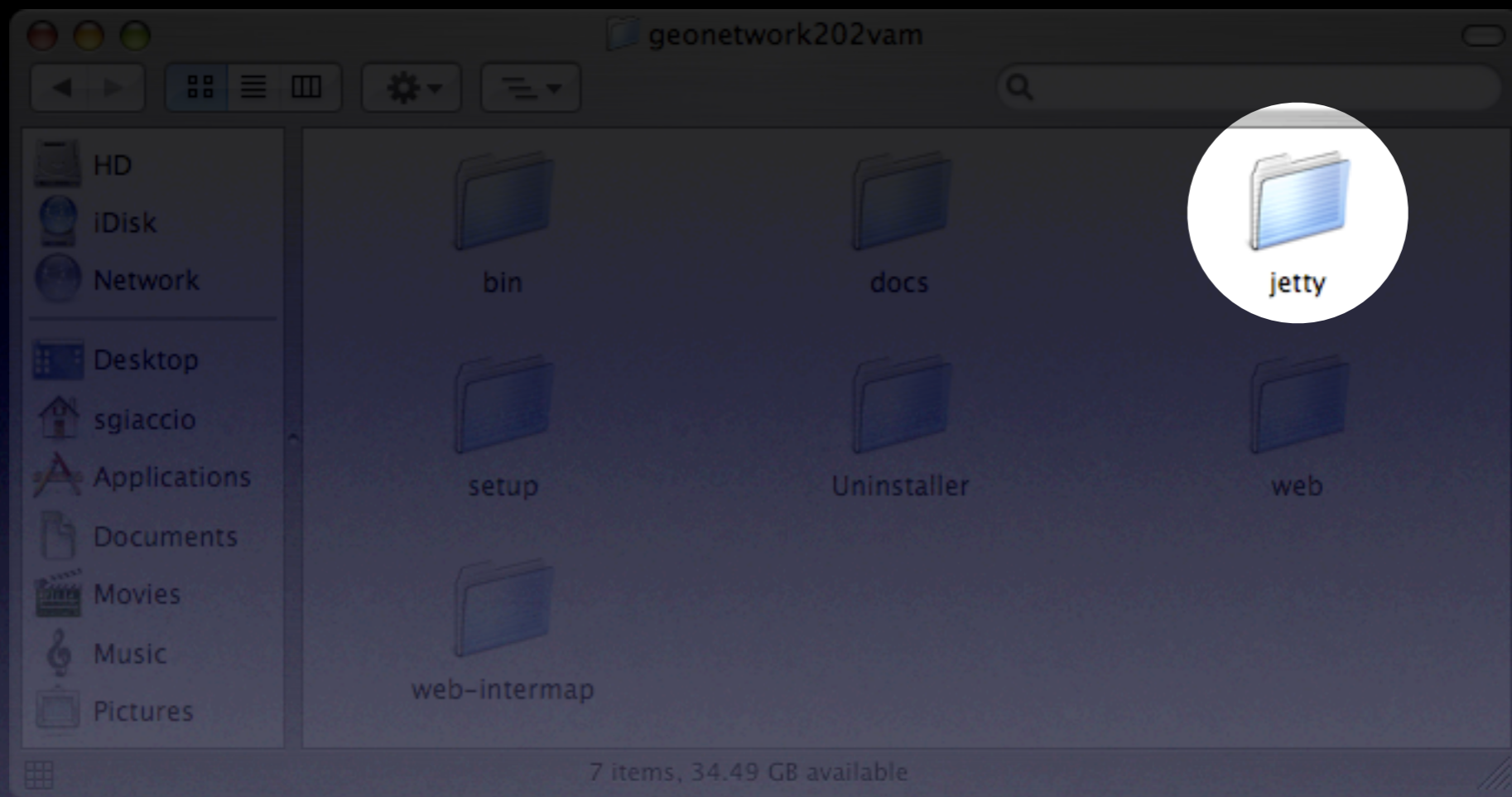
/jetty/bin/jetty.xml

```
...  
<Call name="addListener">  
  <Arg>  
    <New class="org.mortbay.http.SocketListener">  
      <Set name="port">8080</Set>  
      <Set name="MinThreads">10</Set>  
      <Set name="MaxThreads">200</Set>  
      <Set name="MaxIdleTimeMs">30000</Set>  
      <Set name="lowResources">50</Set>  
      <Set name="LowResourcePersistTimeMs">2000</Set>  
    </New>  
  </Arg>  
</Call>  
...
```

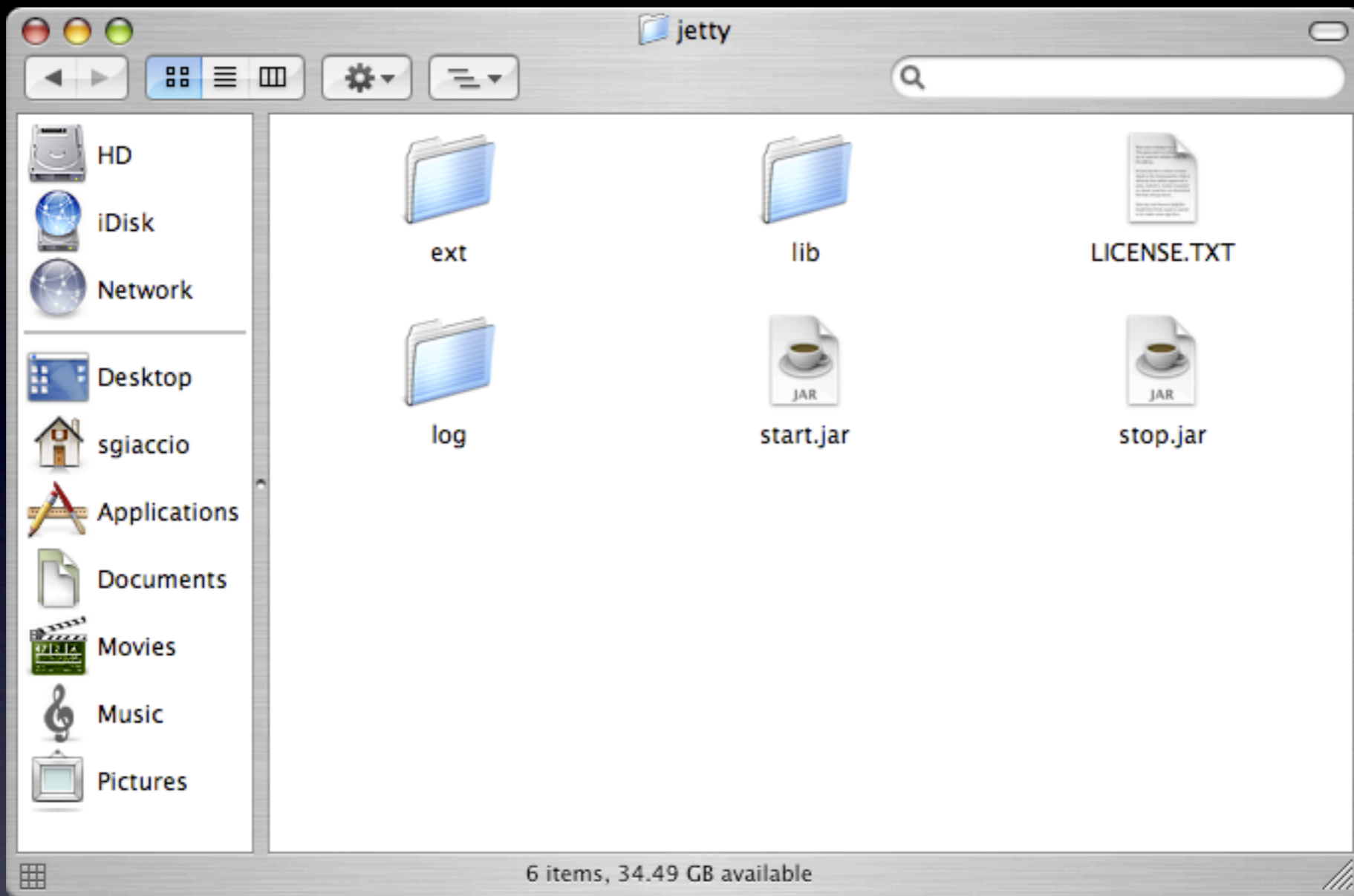
- GeoNetworkstart and stop scripts (.sh and .bat)
- Jetty (servlet engine) configuration file
- Migration scripts for backward compatibility
- Create database script



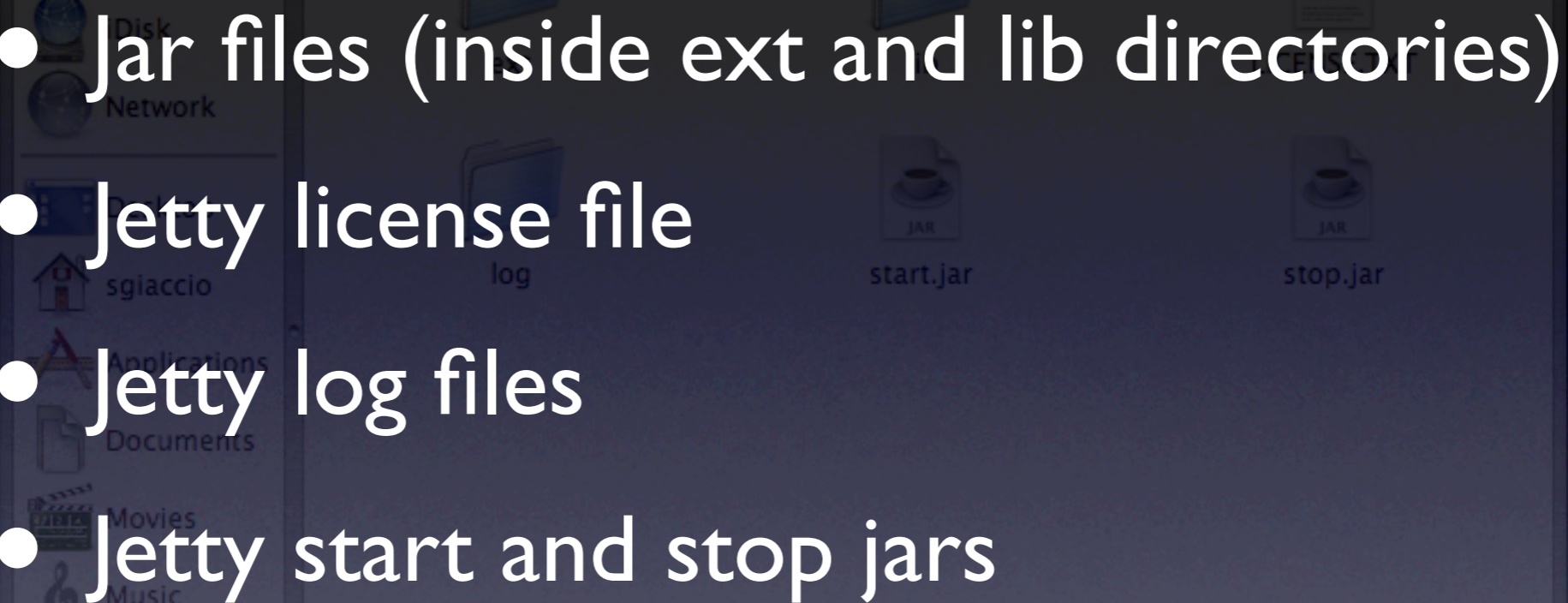
bin directory



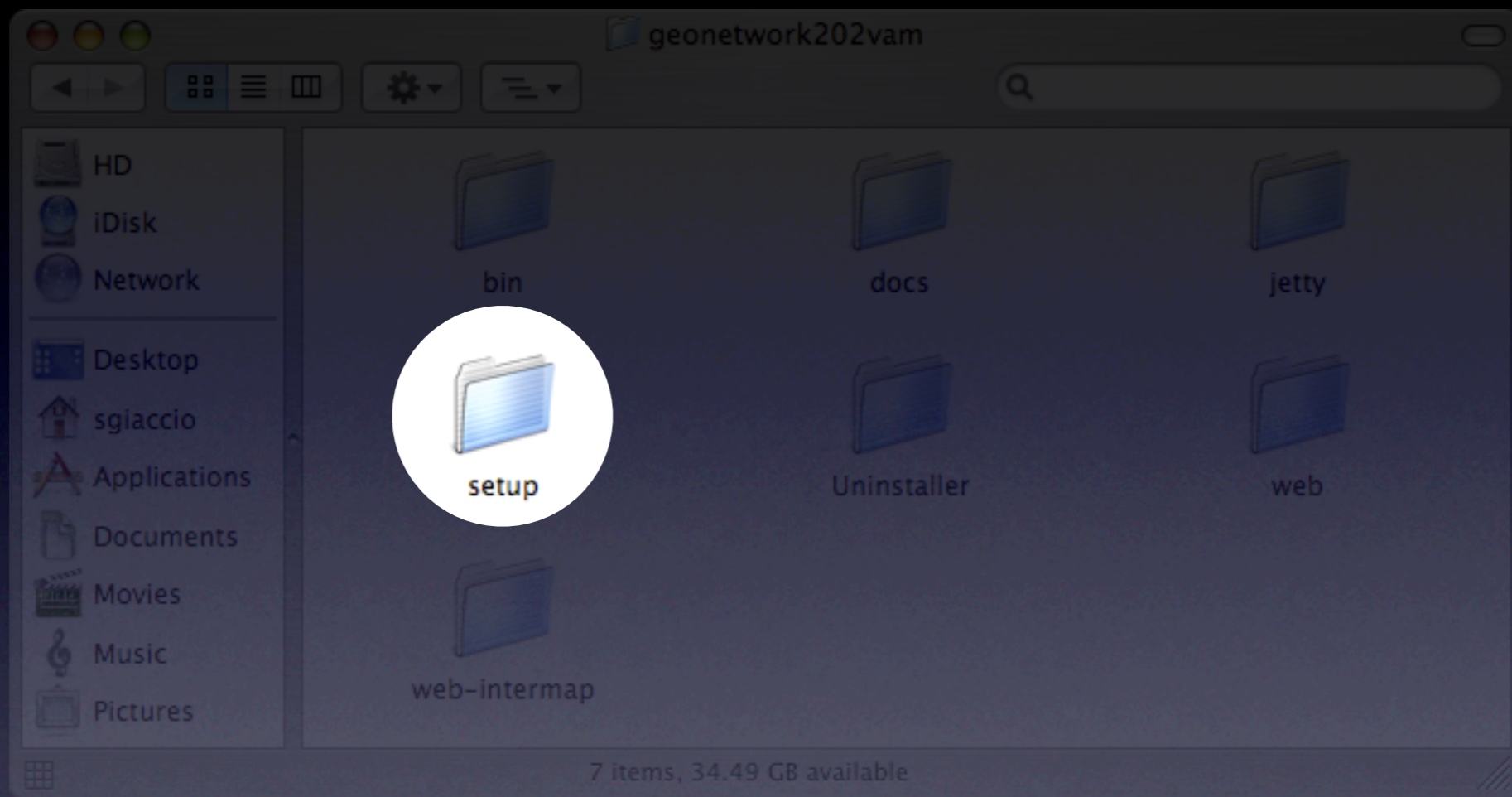
jetty directory



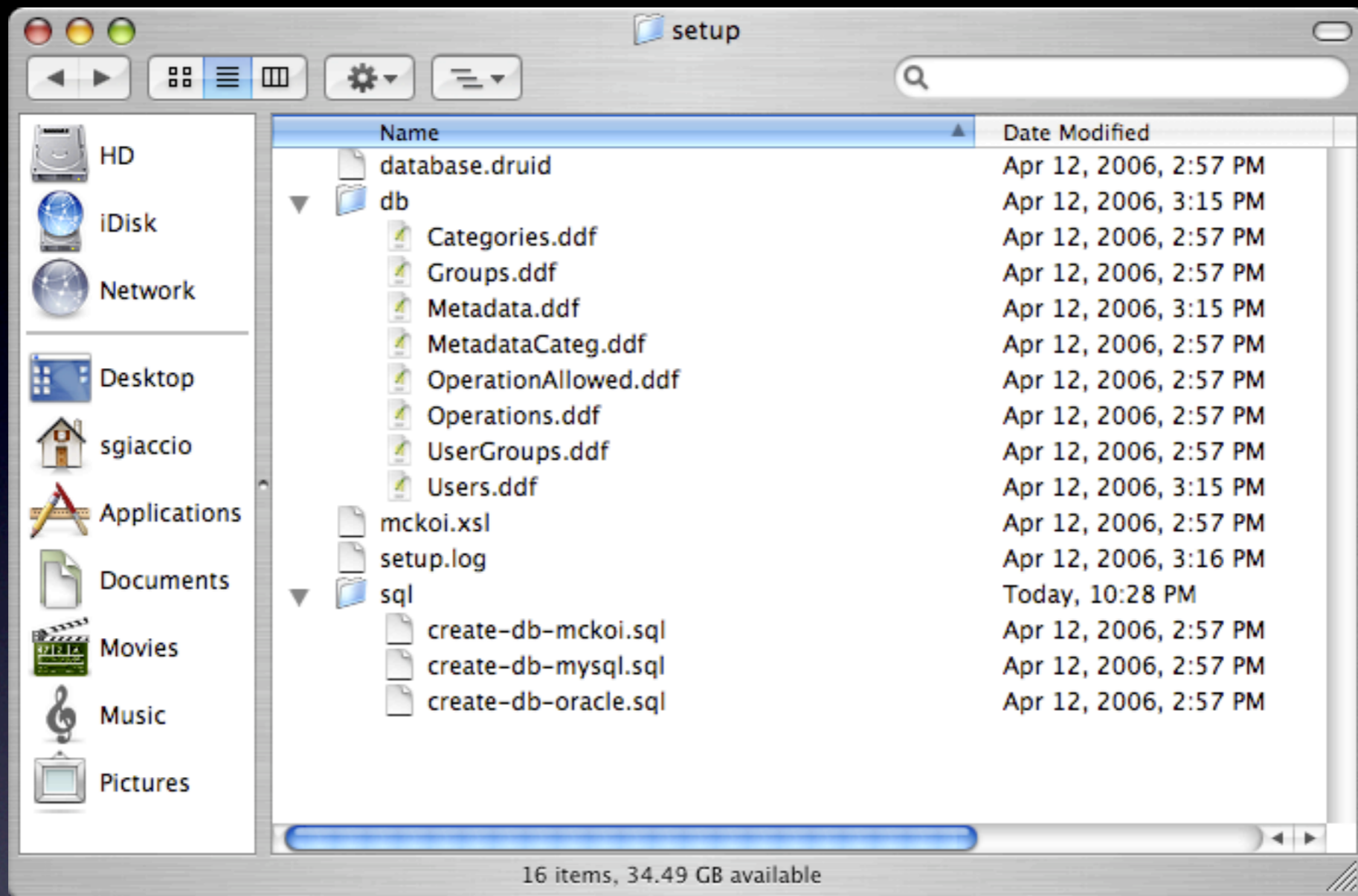
jetty directory

- 
- Jar files (inside ext and lib directories)
 - Jetty license file
 - Jetty log files
 - Jetty start and stop jars

jetty directory

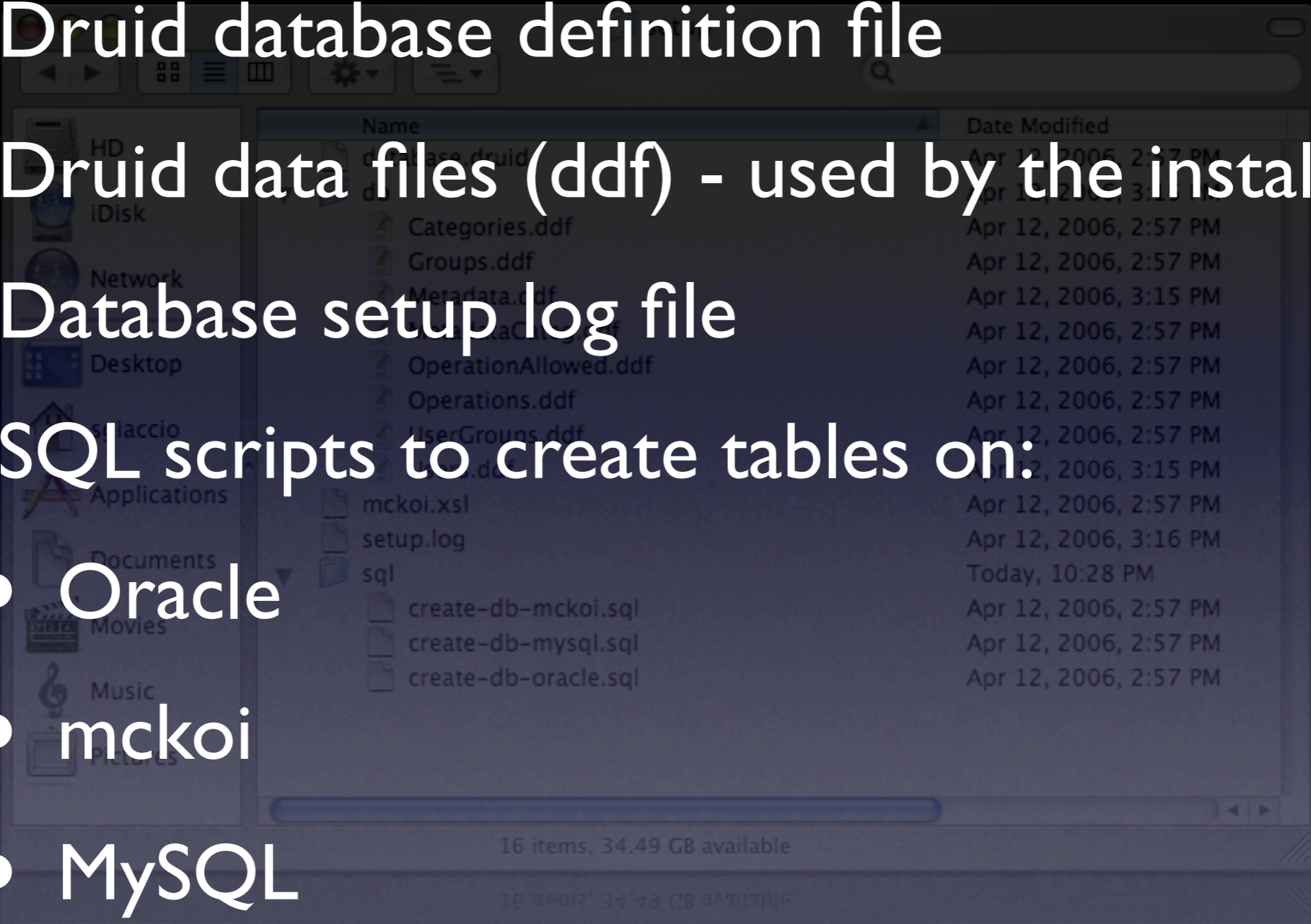


setup directory

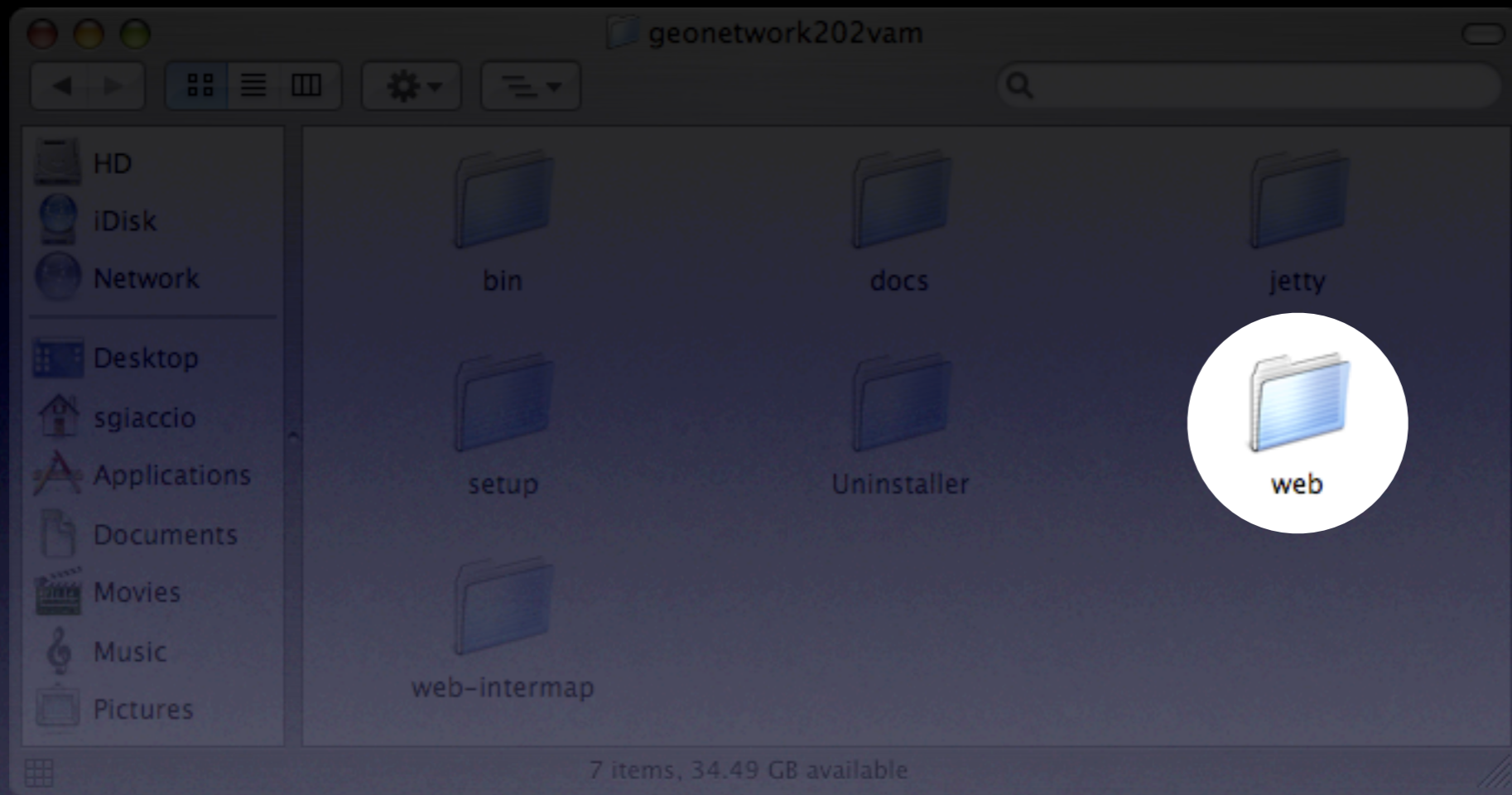


setup directory

- Druid database definition file
- Druid data files (ddf) - used by the installer
- Database setup log file
- SQL scripts to create tables on:
 - Oracle
 - mckoi
 - MySQL



setup directory



web directory

web directory

web directory

- ▶ index.html
- ▶ geonetwork.css
- ▶ **scripts/**
 - ▶ **calendar/**
 - ▶ form_check.js
 - ▶ geonetwork.js
- ▶ **images/**
- ▶ **loc/**
 - ▶ **en/**
 - ▶ **es/**
 - ▶ **fr/**
- ▶ **xsl/**
- ▶ **xml/**
- ▶ **WEB-INF/**

Presentation

- ▶ index.html
- ▶ geonetwork.css
- ▶ scripts/
 - ▶ calendar/
 - ▶ form_check.js
 - ▶ geonetwork.js
- ▶ images/
- ▶ loc/
 - ▶ en/
 - ▶ es/
 - ▶ fr/
- ▶ xsl/
- ▶ xml/
- ▶ WEB-INF/

Information

- ▶ index.html
- ▶ geonetwork.css
- ▶ scripts/
 - ▶ calendar/
 - ▶ form_check.js
 - ▶ geonetwork.js
- ▶ images/
- ▶ loc/
 - ▶ en/
 - ▶ es/
 - ▶ fr/
- ▶ xsl/
- ▶ xml/
- ▶ WEB-INF/

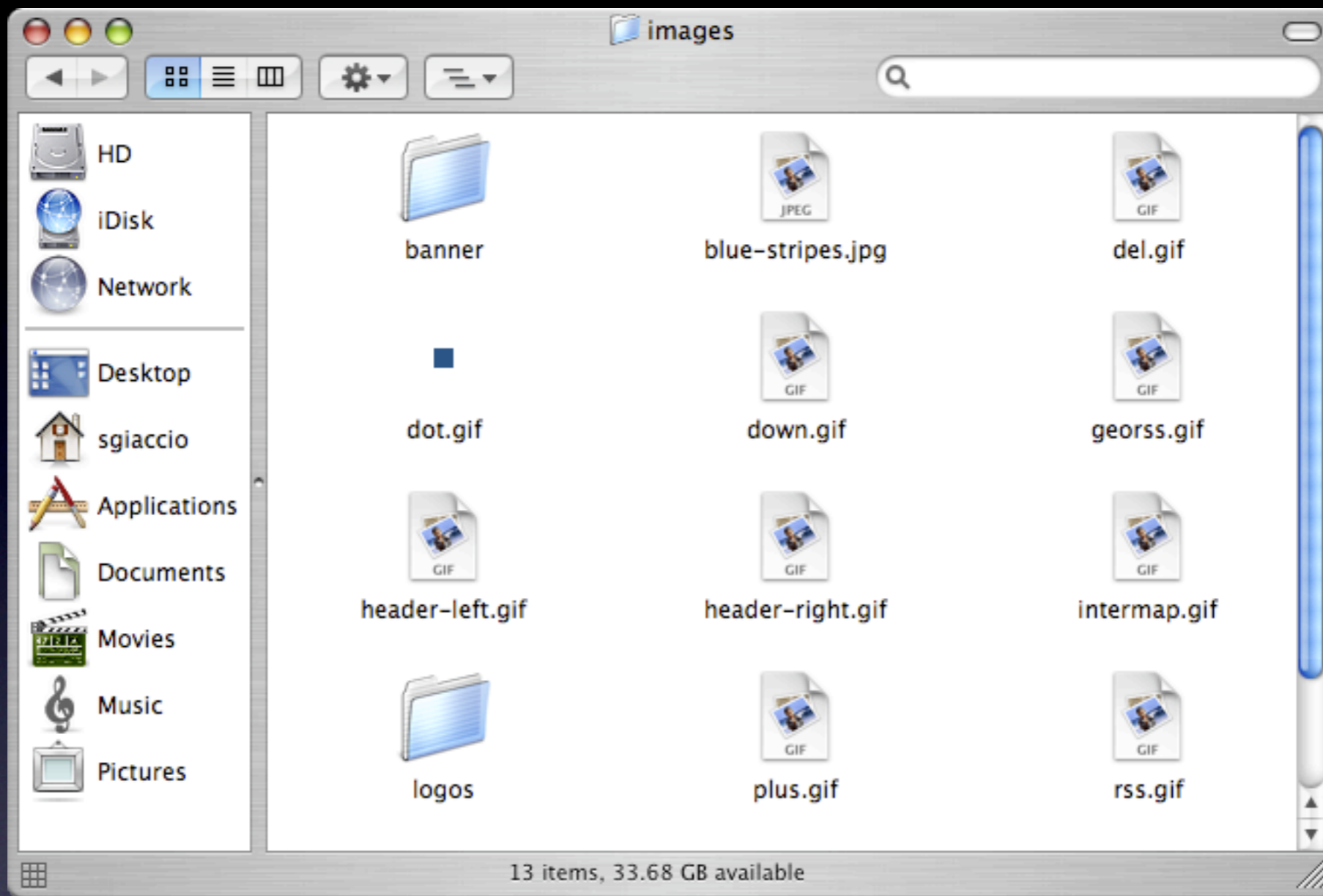
index.html

```
<HTML>
  <HEAD>
    <META http-equiv="refresh" content="0; URL=/geonetwork/srv/en/main.home">
    <META http-equiv="Pragma" content="no-cache">
    <META http-equiv="Cache-Control" content="no-cache,no-store">

    <script language="Javascript1.5" type="text/javascript">
      window.location="/geonetwork/srv/en/main.home"
    </script>
  </HEAD>
  <BODY BGCOLOR="#FFFFFF">
    <FONT size=-5><A HREF="/geonetwork/srv/en/main.home">GeoNetwork</A></FONT>
  </BODY>
</HTML>
```


images directory

- ▶ index.html
- ▶ geonetwork.css
- ▶ **scripts/**
 - ▶ **calendar/**
 - ▶ form_check.js
 - ▶ geonetwork.js
- ▶ **images/**
- ▶ **loc/**
 - ▶ **en/**
 - ▶ **es/**
 - ▶ **fr/**
- ▶ **xsl/**
- ▶ **xml/**
- ▶ **WEB-INF/**



images directory

Find Interactive Maps, GIS datasets, Satellite Imagery and Related Applications

Free Text

[Advanced search](#)

Map type

 Digital Hard copy

[Remote search](#)

Hits per page

Search

GeoNetwork's purpose is:

- To improve access to and integrated use of spatial data and information
- To support decision making
- To promote multidisciplinary approaches to sustainable development
- To enhance understanding of the benefits of geographic information

GeoNetwork opensource allows to easily share geographically referenced thematic information between different organizations. For more information please contact: [admin](#) or send us [feedback](#)

Info in int

You can find
GeoNetwork
map, or dire
map server.

Supported r
[Consortium](#)
[ESRI@ ArcI](#)

Featured map

Africa Years with

Featured map

Recent Additions

[RSS](#)

[GeoRSS](#)

• Lesotho Number of Food Beneficiaries

Recent Additions

[RSS](#)

[GeoRSS](#)

• Applications

images directory

Find Interactive Maps, GIS datasets, Satellite Imagery and Related Applications

Free Text

Advanced search

Map type

 Digital Hard copy

Remote search

Hits per page

Search

GeoNetwork's purpose is:

- To improve access to and integrated use of spatial data and information
- To support decision making
- To promote multidisciplinary approaches to sustainable development
- To enhance understanding of the benefits of geographic information

GeoNetwork opensource allows to easily share geographically referenced thematic information between different organizations. For more information please contact: [admin](#) or send us [feedback](#)

Info in int

You can find
GeoNetwork
map, or dire
map server.

Supported r
Consortium
ESRI® ArcI

Featured map

Africa Years with

Learned web

Recent Additions

RSS

GeoRSS

• Lesotho Number of Food Beneficiaries

• Applications

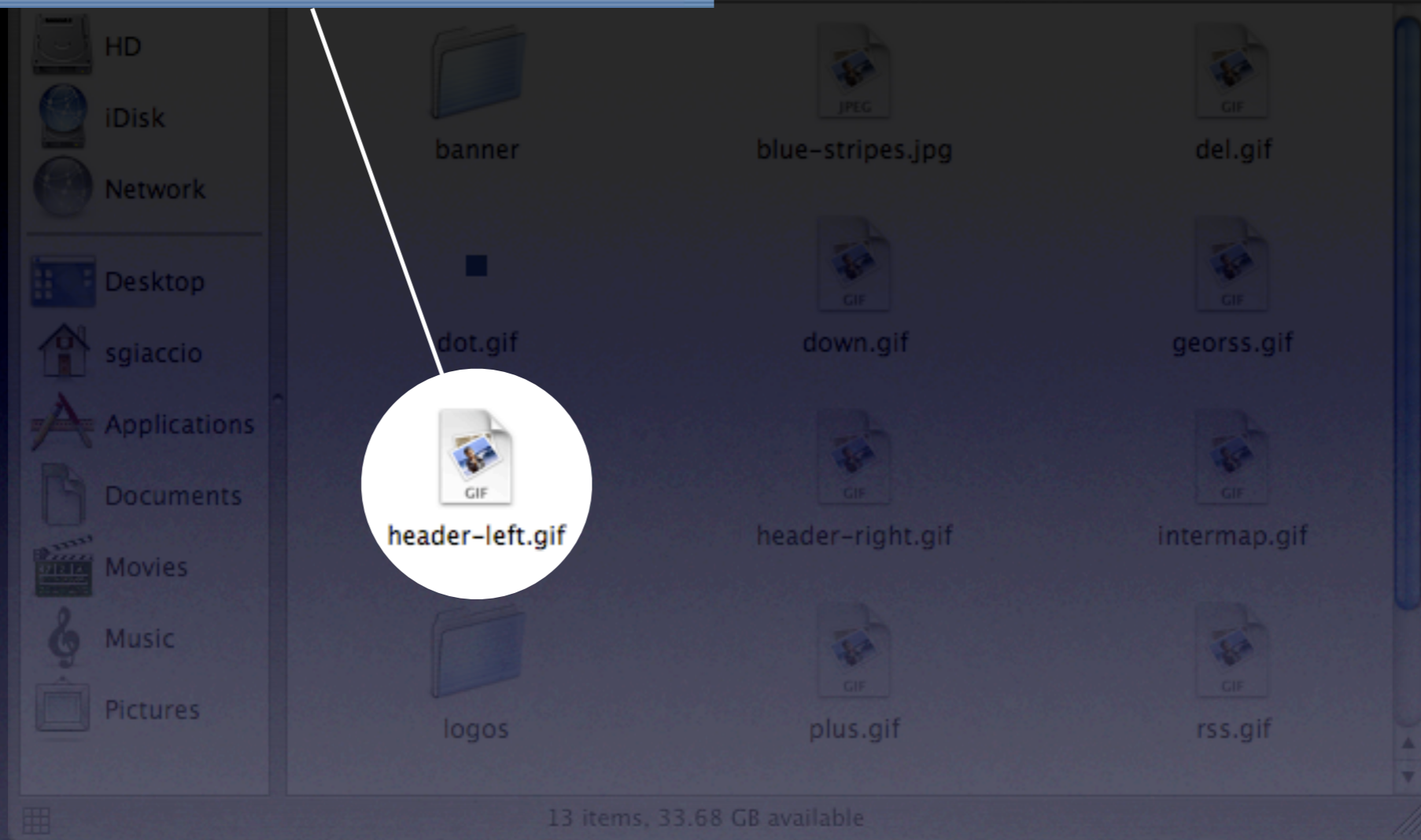
geoserver yaddone

RSS

GeoRSS

images directory

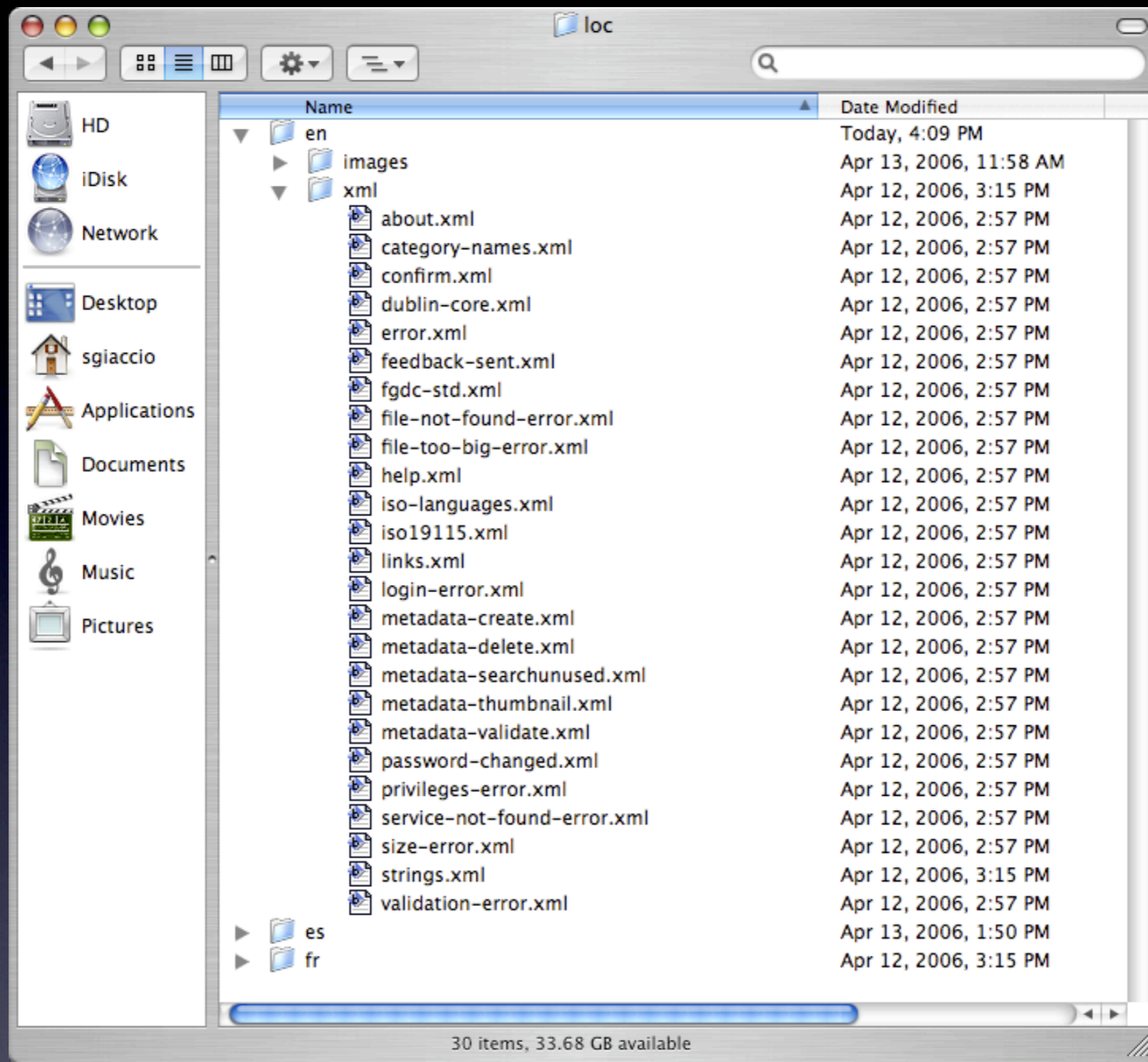
GeoNetwork
opensource



header-left.gif

loc directory

- ▶ index.html
- ▶ geonetwork.css
- ▶ **scripts/**
 - ▶ **calendar/**
 - ▶ form_check.js
 - ▶ geonetwork.js
- ▶ **images/**
- ▶ **loc/**
 - ▶ **en/**
 - ▶ **es/**
 - ▶ **fr/**
- ▶ **xsl/**
- ▶ **xml/**
- ▶ **WEB-INF/**



loc directory

Find Interactive Maps, GIS datasets, Satellite Imagery and Related Applications

Free Text

Advanced search

Map type

Digital Hard copy

Remote search

Hits per page

Search

GeoNetwork's purpose is:

- To improve access to and integrated use of spatial data and information
- To support decision making
- To promote multidisciplinary approaches to sustainable development
- To enhance understanding of the benefits of geographic information

GeoNetwork opensource allows to easily share geographically referenced thematic information between different organizations. For more information please contact: [admin](#) or send us [feedback](#)

Info in int

You can find
GeoNetwork
map, or dire
map server.

Supported r
[Consortium](#)
[ESRI® ArcI](#)

Featured map

Africa Years with

Featured map

Recent Additions [RSS](#) [GeoRSS](#)

• Lesotho Number of Food Beneficiaries

Recent Additions [RSS](#) [GeoRSS](#)

• Applications

strings.xml


```
<mandatory>Mandatory</mandatory>
<mandatoryIf>Mandatory if</mandatoryIf>
<mainpage1>
  <h1>GeoNetwork's purpose is:</h1>
  <ul>
    <li>To improve access to and integrated use of spatial data and
information</li>
    <li>To support decision making</li>
    <li>To promote multidisciplinary approaches to sustainable
development</li>
    <li>To enhance understanding of the benefits of geographic
information</li>
  </ul>
</mainpage1>
```

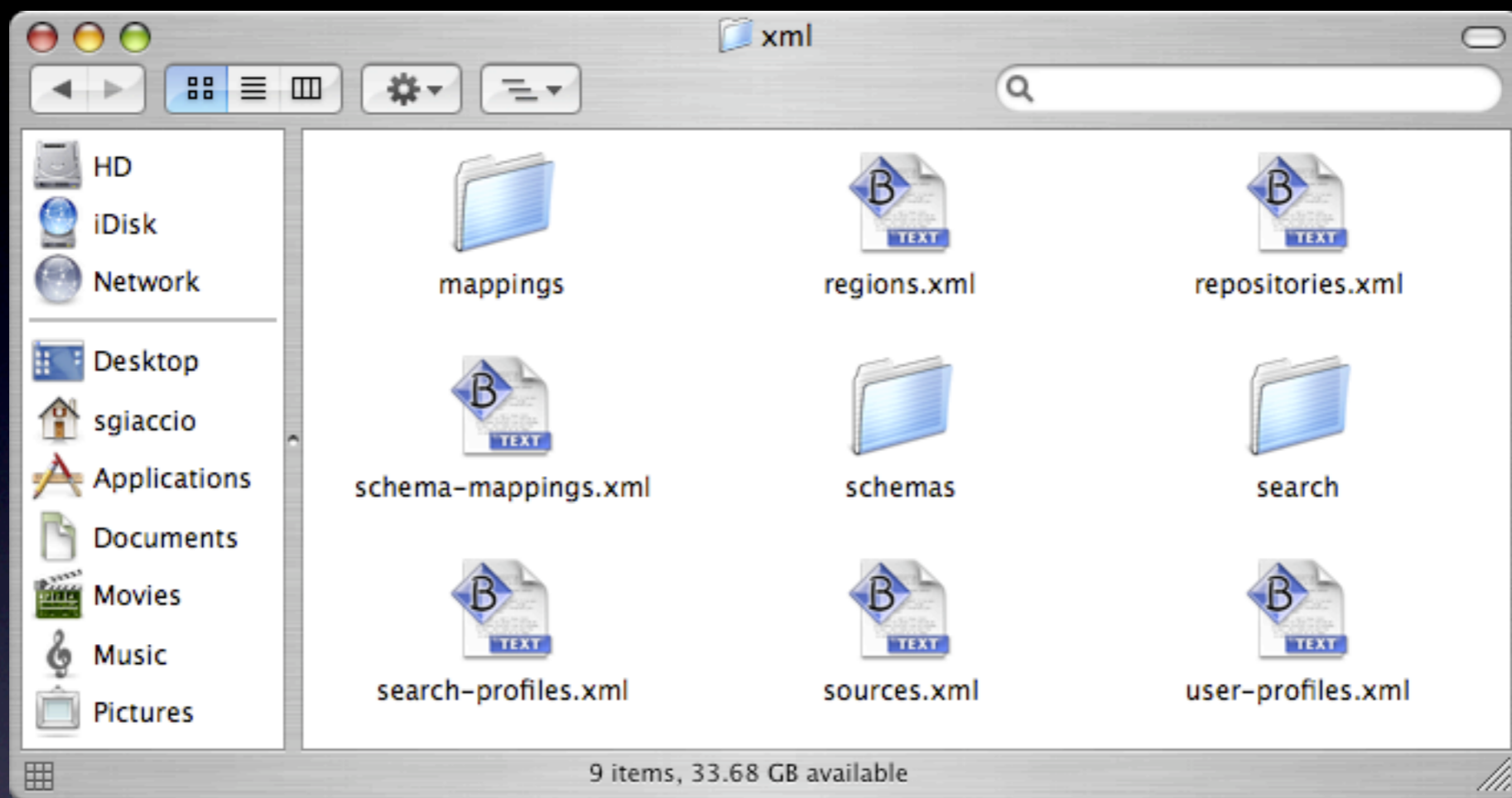
GeoNetwork's purpose is:

- To improve access to and integrated use of spatial data and information
- To support decision making
- To promote multidisciplinary approaches to sustainable development
- To enhance understanding of the benefits of geographic information

strings.xml

xml directory

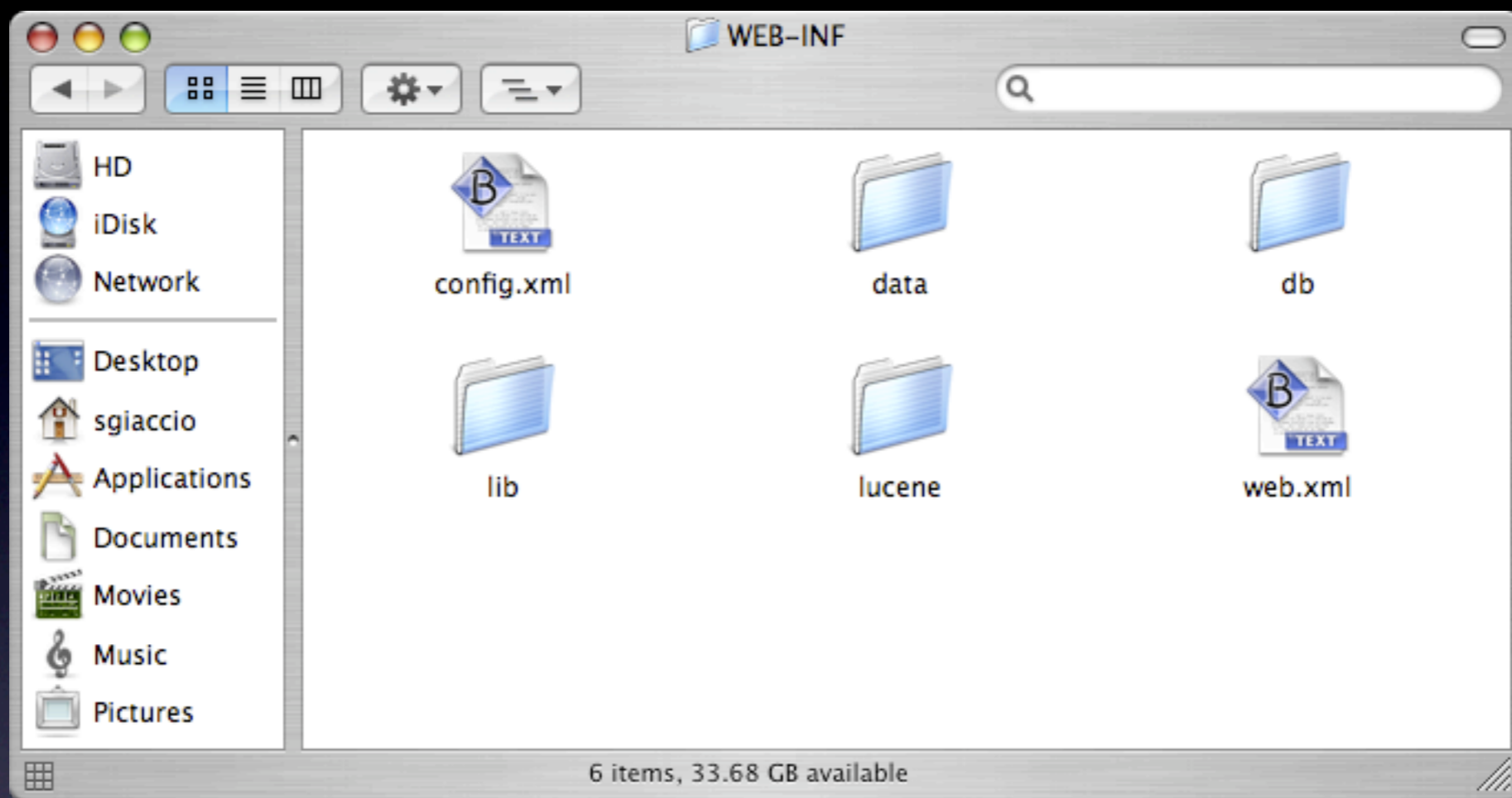
- ▶ index.html
- ▶ geonetwork.css
- ▶ **scripts/**
 - ▶ **calendar/**
 - ▶ form_check.js
 - ▶ geonetwork.js
- ▶ **images/**
- ▶ **loc/**
 - ▶ **en/**
 - ▶ **es/**
 - ▶ **fr/**
- ▶ **xsl/**
- ▶ **xml/**
- ▶ **WEB-INF/**



xml directory

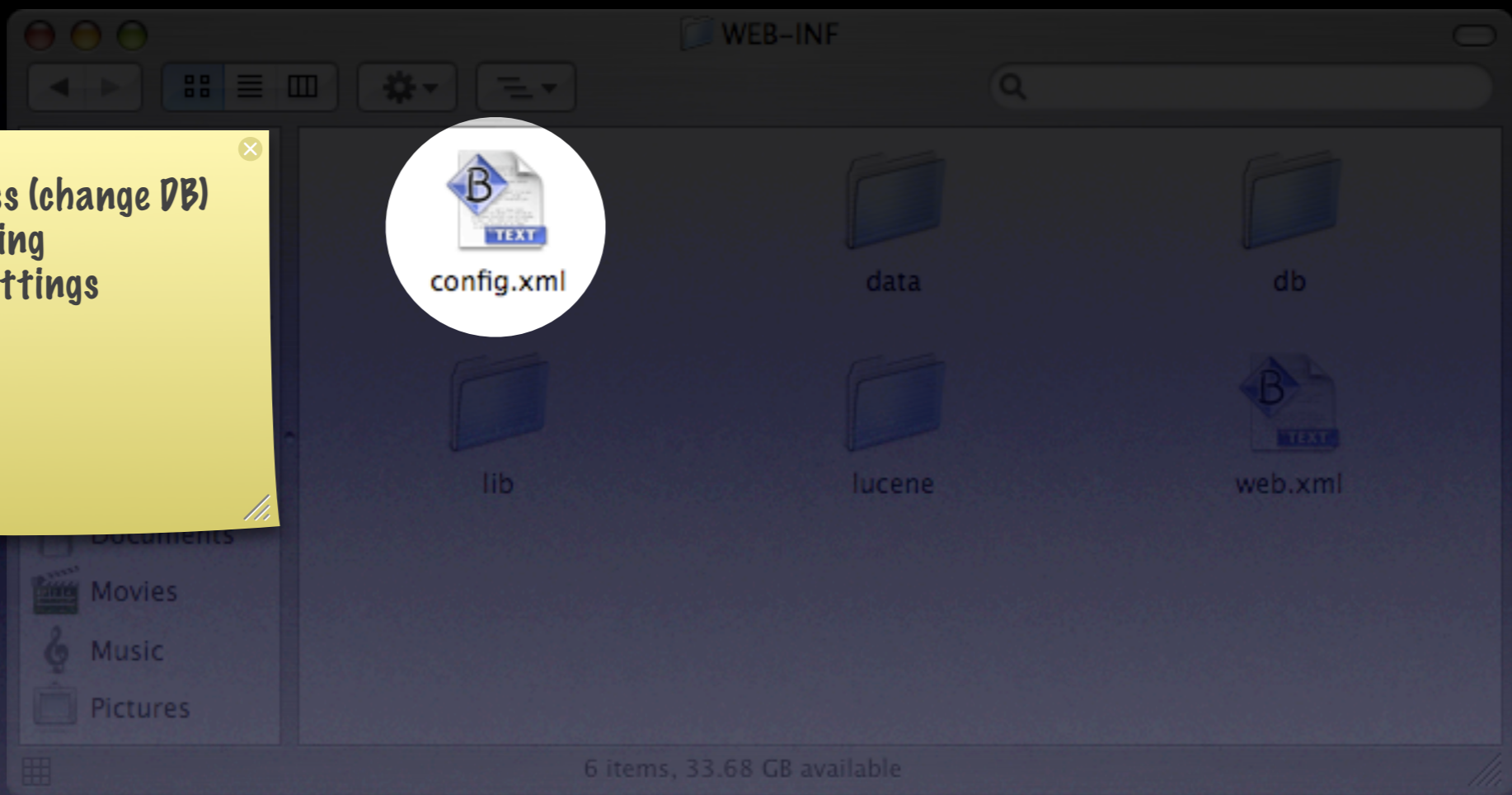
WEB-INF directory

- ▶ index.html
- ▶ geonetwork.css
- ▶ **scripts/**
 - ▶ **calendar/**
 - ▶ form_check.js
 - ▶ geonetwork.js
- ▶ **images/**
- ▶ **loc/**
 - ▶ **en/**
 - ▶ **es/**
 - ▶ **fr/**
- ▶ **xsl/**
- ▶ **xml/**
- ▶ **WEB-INF/**

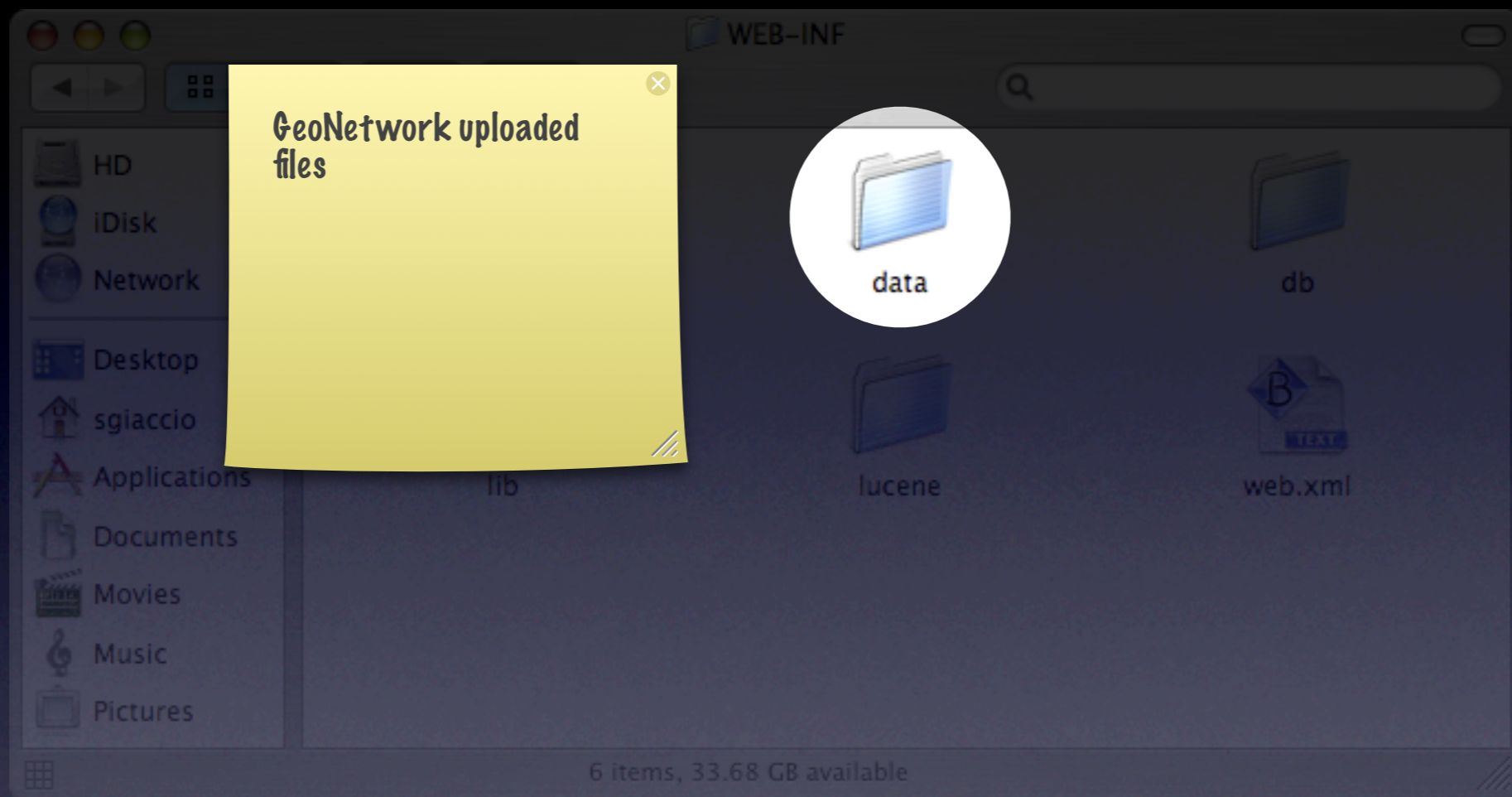


WEB-INF directory

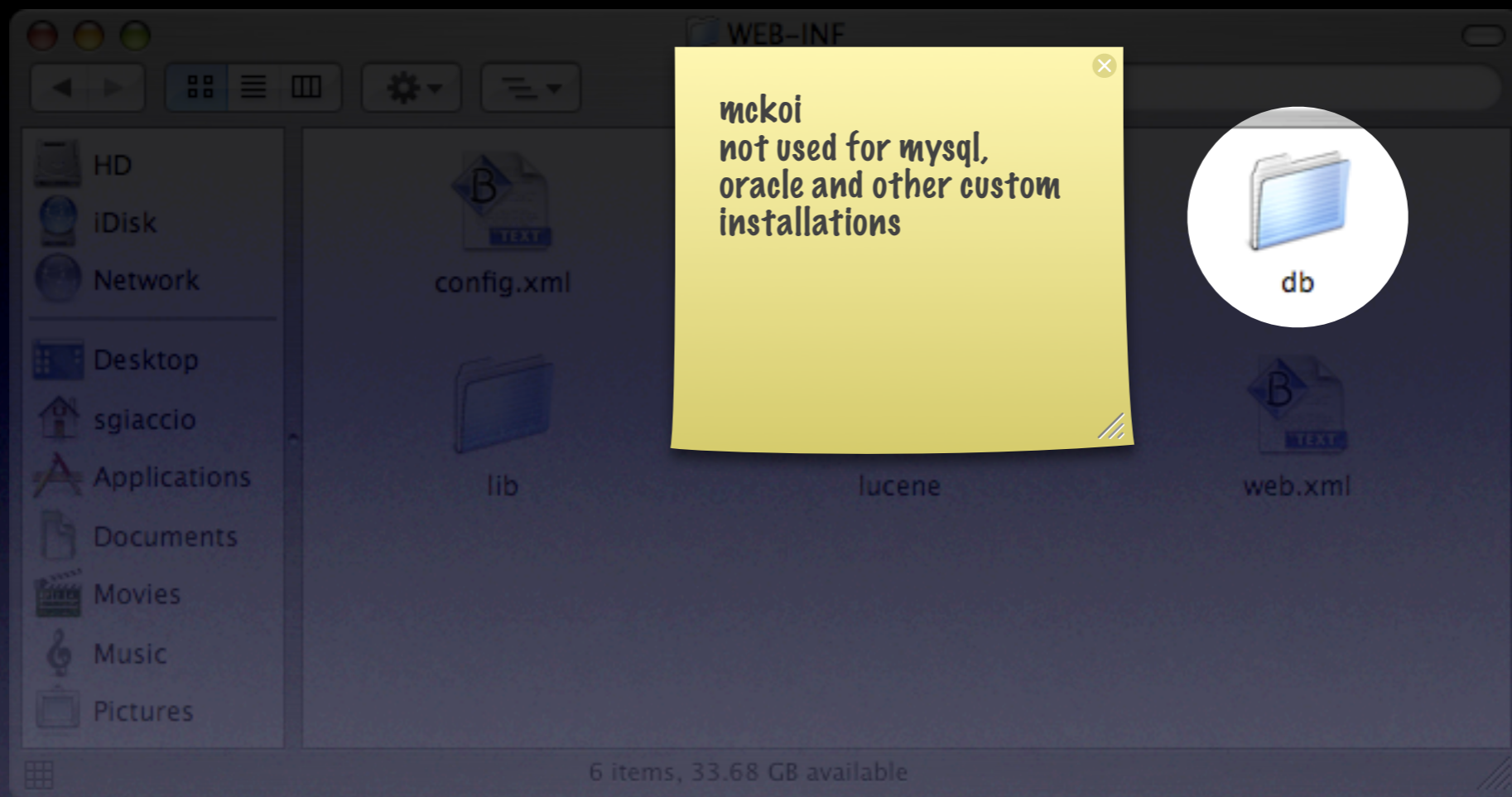
DB access (change DB)
Harvesting
Proxy settings



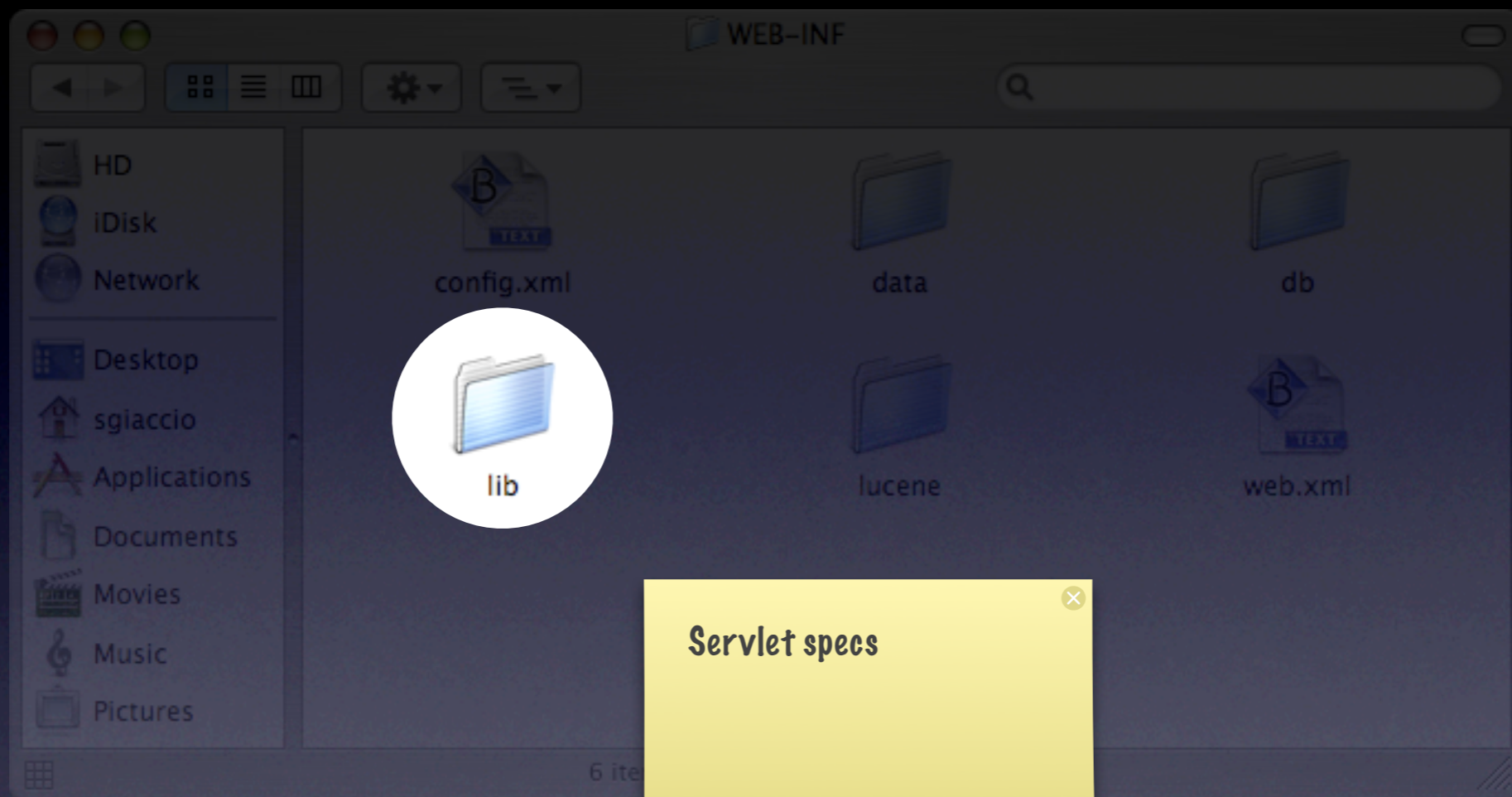
config.xml



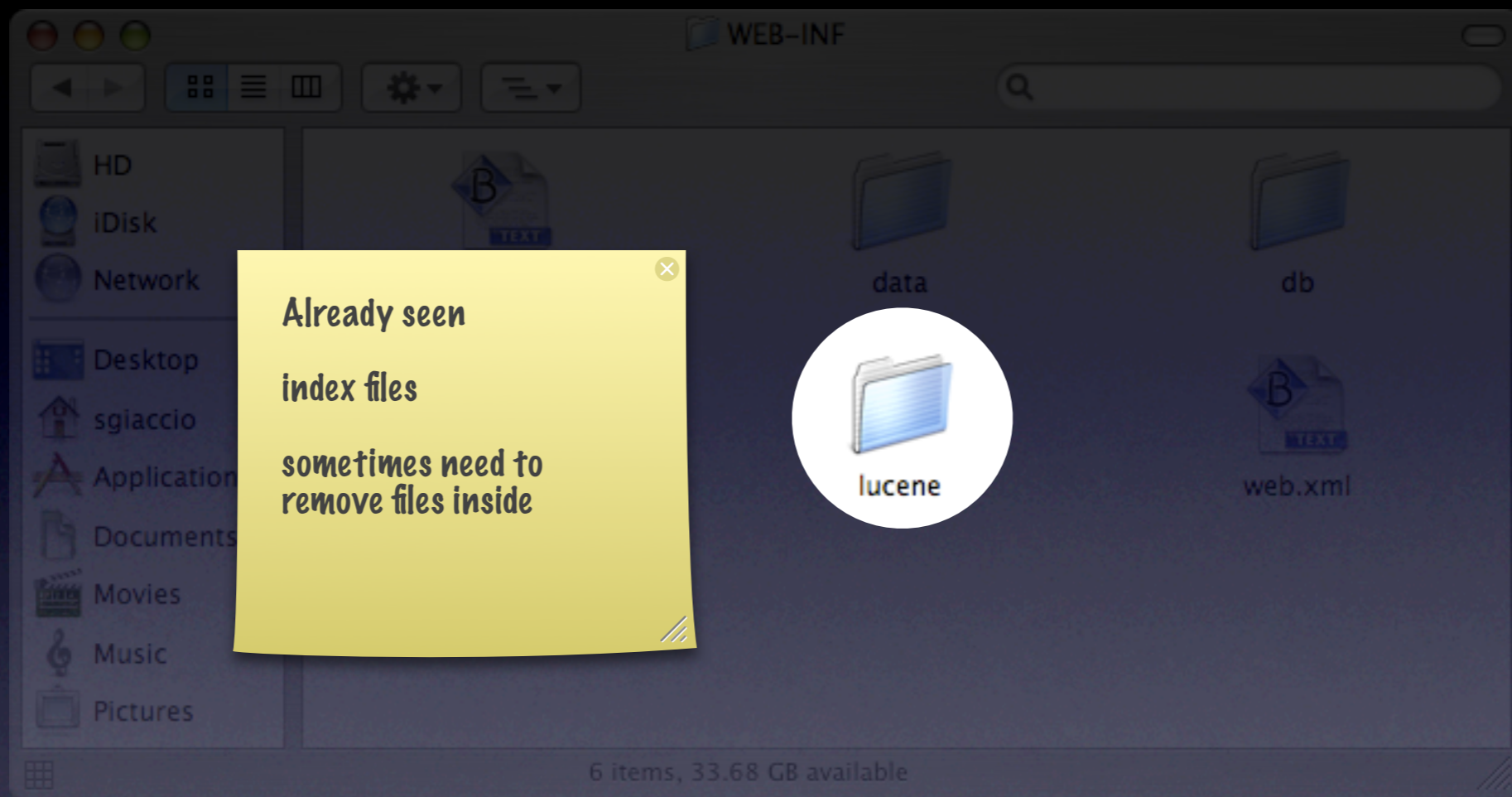
data directory



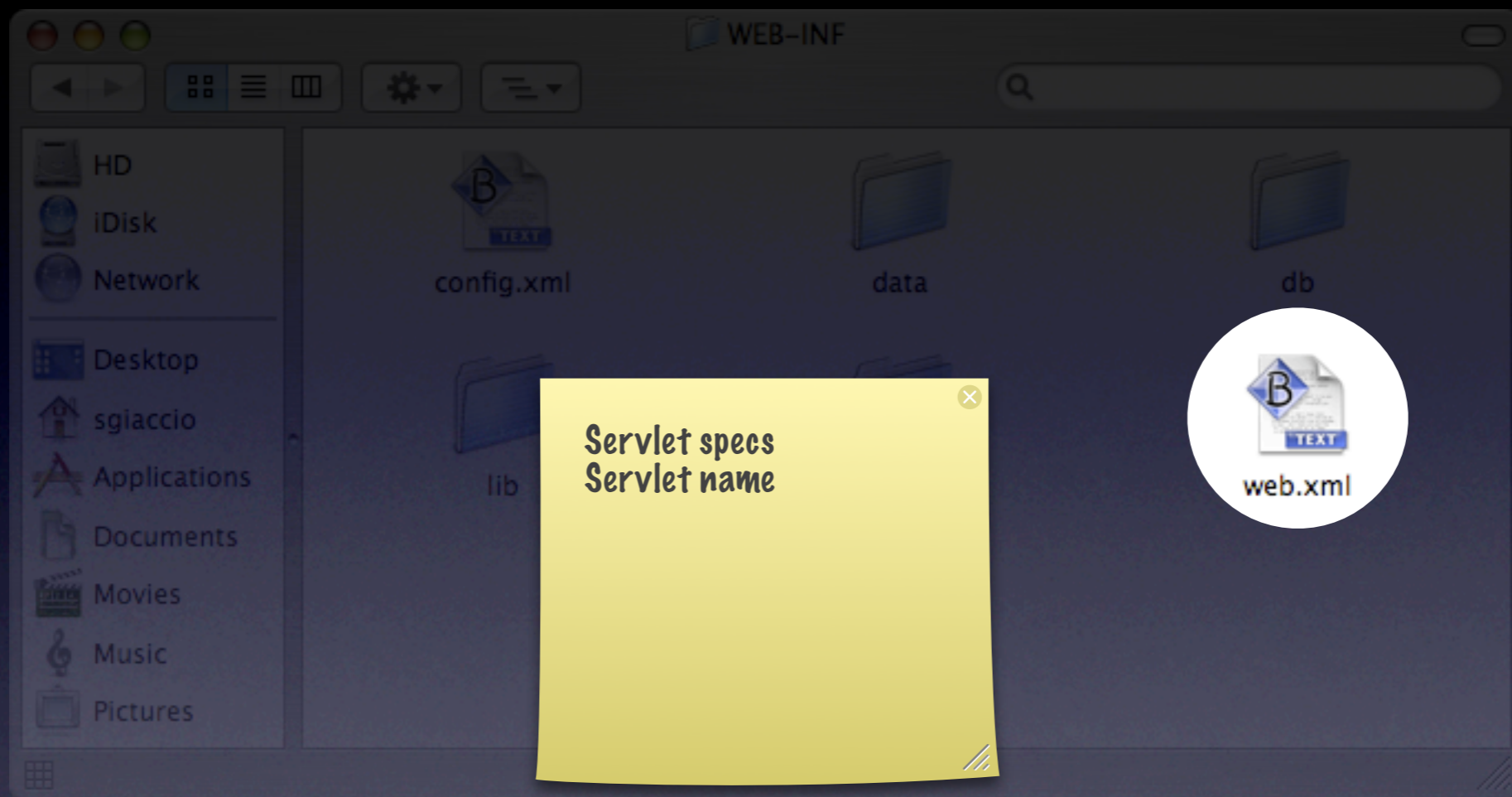
db directory



lib directory



lucene directory



web.xml